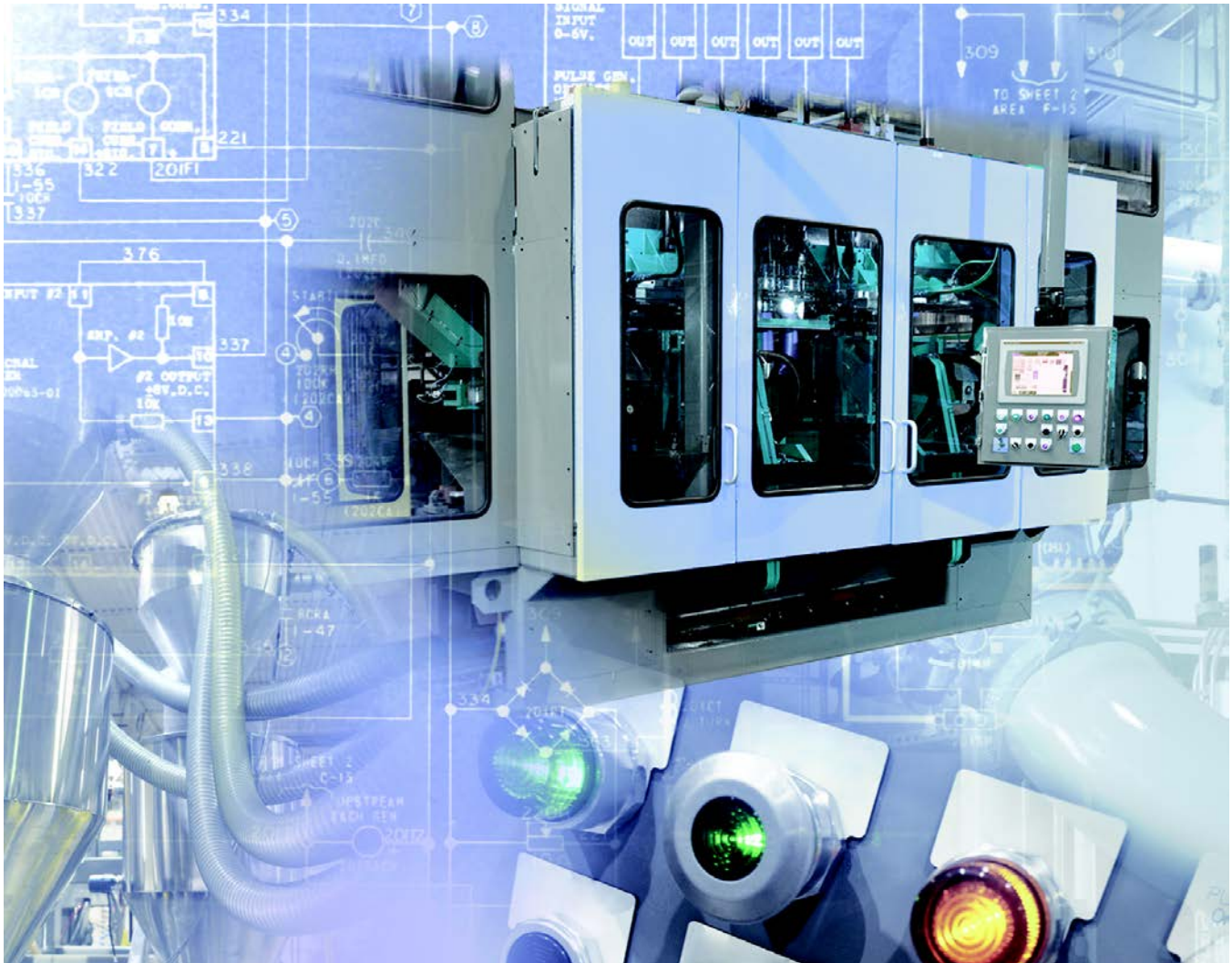


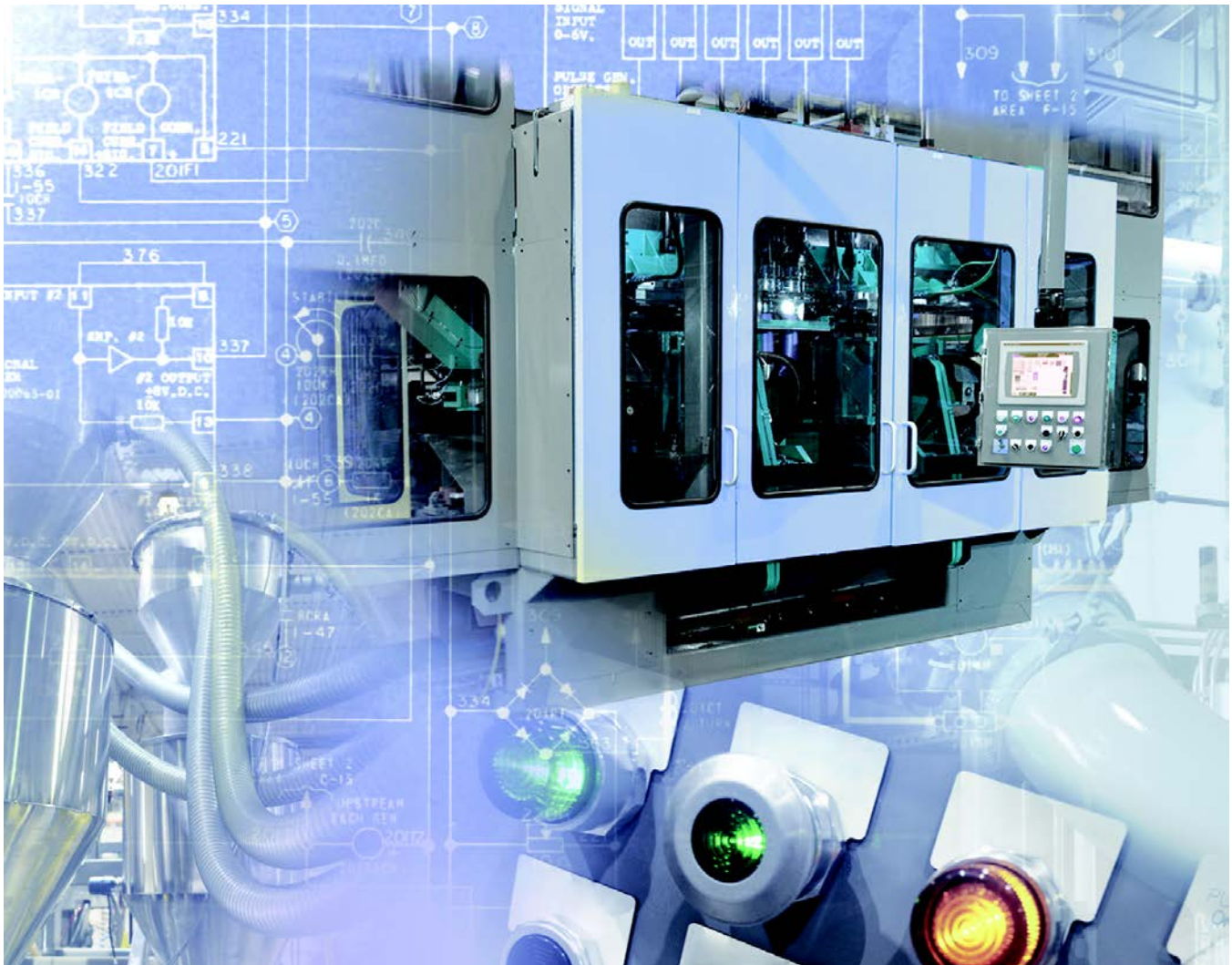
Visualization Solutions



[PanelView Plus 6 Terminals](#)
[PanelView Component Terminals](#)
[Industrial Computers and Monitors](#)

LISTEN.
THINK.
SOLVE.®

Visualization Solutions



[PanelView Plus 6 Terminals](#)
[PanelView Component Terminals](#)
[Industrial Computers and Monitors](#)

LISTEN.
THINK.
SOLVE.®

What's Inside

Topic	Page
Visualization Platforms	4
HMI Terminal Comparison	6
PanelView Plus 6 Terminals	7
Typical Configurations	8
PanelView Plus 6 Terminals - 700 to 1500	10
PanelView Plus 6 Terminals - 400 and 600	16
PanelView Plus 6 Compact Terminals	19
Communication Cables	21
PanelView Plus 6 Migration Path	23
PanelView Component Terminals	24
Industrial Computers and Monitors	27
Integrated Display Computers	29
Integrated Display Computers with Keypad	35
Hazardous Location Computers	37
Non-display Computers	38
Compact Non-display Computers	41
Industrial Monitors	43
HMI Software	46

This selection guide is meant to help make initial decisions for the visualization products best suited for your system requirements. For detailed technical specifications, certifications, and environmental specifications, see the documentation links on the front cover of this selection guide.

For assistance and validation in making final product selections, consider using the Configuration and Selection tools available at <http://www.rockwellautomation.com/en/e-tools/index.html>.

Adding Visualization to Your Control System

As a machine builder or end user, you design control solutions with an eye toward improving safety, higher levels of performance and efficiency, and better integration with the rest of the manufacturing operation. To achieve these goals, you need a scalable, modular control system that offers safety, throughput and information management capabilities to match each application's requirements.

The Rockwell Automation® Integrated Architecture™ system is unique in that it offers scalable, integrated safety, motion control, and visualization capabilities that are ideal for machine builders and end users who want a single control and development environment, regardless of the application size or complexity.

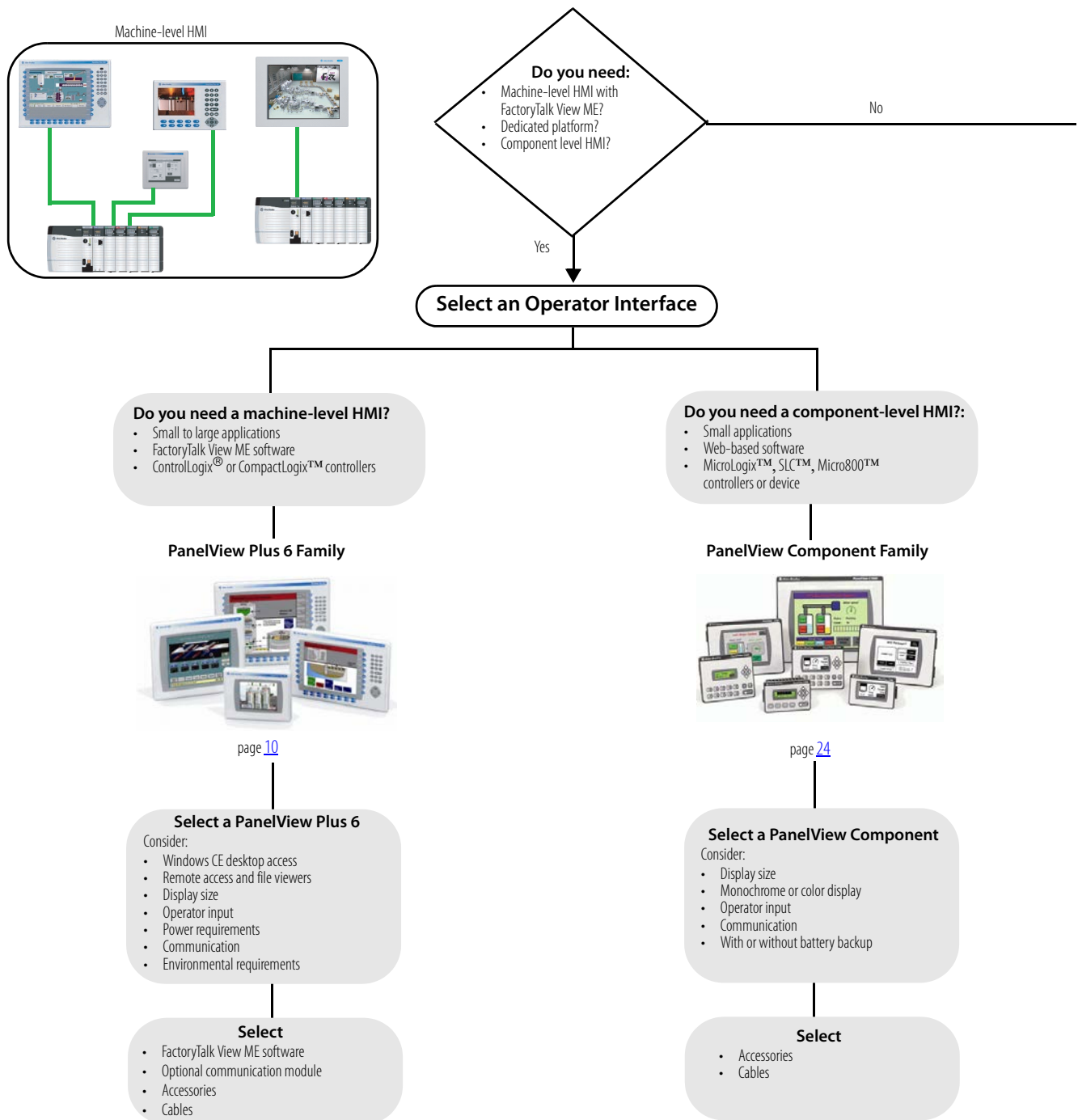
The visualization products comprise a suite of scalable HMI software and operator interface hardware that provide plant floor machine operators, supervisors, engineers, and business managers a window to critical data, and production and process information. And all this can be done from the plant floor or remotely from a web browser.

Whether it's a machine-level or site-level HMI, a Windows CE platform, a smaller component HMI, or an industrial computer, Rockwell Automation has a portfolio of visualization solutions to match your system requirements.

PanelView™ Plus 6 terminals, FactoryTalk® View Machine Edition, and FactoryTalk View Site Edition provide premier integration in a number of ways:

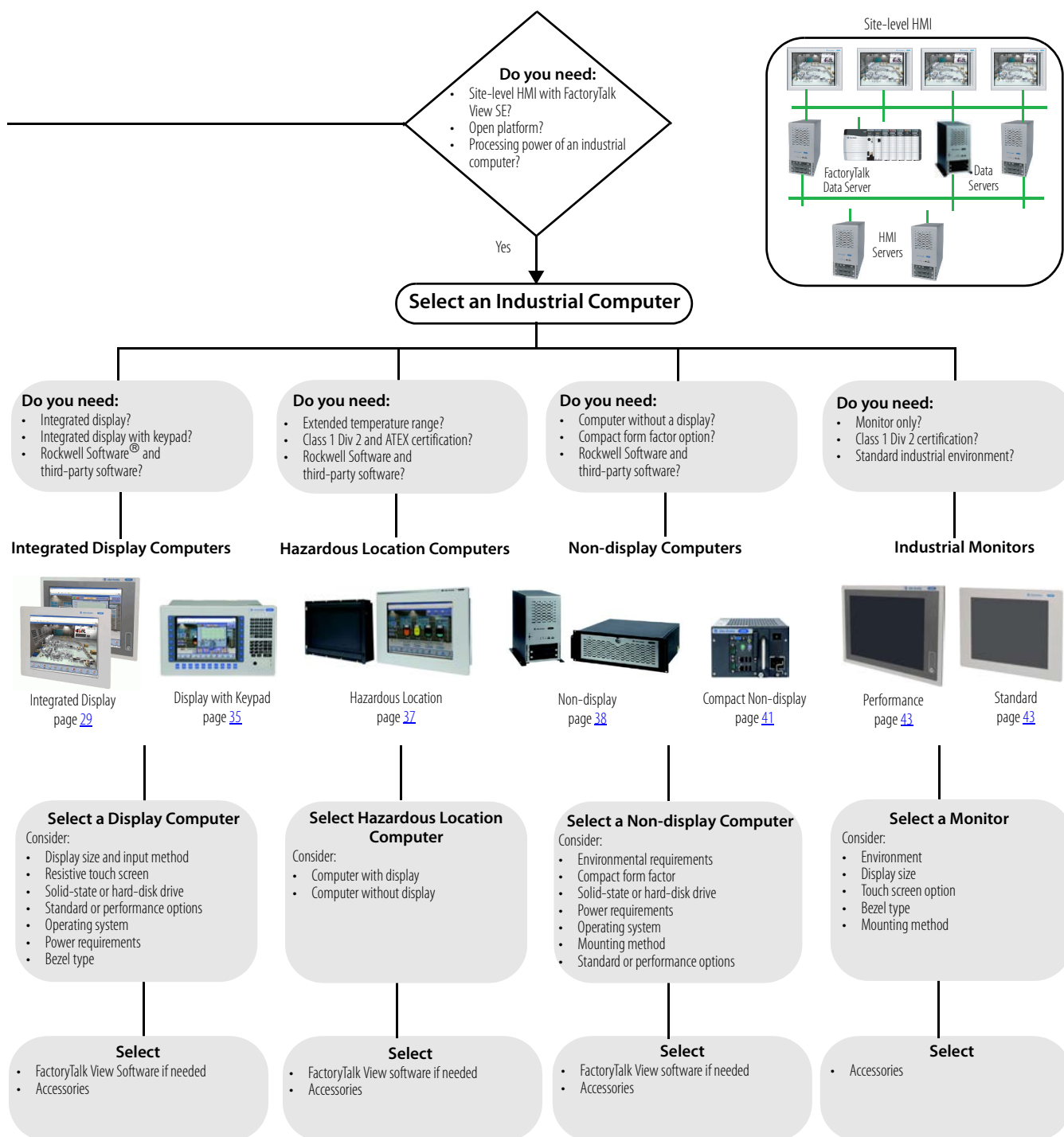
- Reduce programming time with Logix native addressing and the ability to browse directly to Logix tags without creating a separate database.
- Simplifies interaction of all networks with support for all Core Integrated Architecture CIP networks including EtherNet/IP, ControlNet, and numerous other drivers.
- Simplifies development time with pre-engineered, pre-tested faceplates for specific motion, drives, and process applications.

Visualization Platforms



For technical specifications, certifications, and environmental specifications on the PanelView Plus terminals, refer to the PanelView Plus Specifications Technical Data, publication [2711P-TD005](#)

For technical specifications, certifications, and environmental specifications on the PanelView Component terminals, refer to the PanelView Component Specifications Technical Data, publication [2711C-TD001](#)



For technical specifications, certifications, and environmental specifications on the industrial computers and monitors, refer to the Industrial Computers and Monitors Specifications Technical Data, publication [IC-TD001](#).

HMI Terminal Comparison

This table provides a quick glance at comparisons between the different HMI terminal platforms.

HMI Terminal Comparison

Characteristic	2711P PanelView Plus 6 700, 1000, 1250, 1500	2711P PanelView Plus 6 400, 600	2711P PanelView Plus 6 Compact 400, 600	2711C PanelView Component C200, C300, C400, C600, C1000
Display	700: 6.5 in. color TFT 1000: 10.4 in. color TFT 1250: 12.1 in. color TFT 1500: 15 in. color TFT	400: 3.5 in. color TFT 400: 3.5 in. grayscale 600: 5.7 in. color TFT 600: 5.7 in. grayscale	400: 3.5 in. color TFT 400: 3.5 in. grayscale 600: 5.5 in. color TFT	C200: 2 in. mono C300: 3 in. mono C400: 4 in. color TFT C600: 5.7 in. color TFT or mono C1000: 10.4 in. color TFT
Input type	All models: keypad All models: touch screen All models: keypad/touch	400: key/touch (3.5 in.) 400: keypad (3.5 in.) 600: touch screen, keypad, or key/touch	400: key/touch (3.5 in.) 400: keypad (3.5 in.) 600: touch screen	C200: 4 keys or 10 keys+numeric C300: touch screen or 10 keys/+numeric C400: touch screen + 4 keys C600/C1000: touch screen
Built-in communication ports	RS232 EtherNet 2 USB host and 1 USB device	RS232 EtherNet 1 USB host and 1 USB device	RS232 EtherNet 1 USB host and 1 USB device	RS232 RS422/RS485 1 USB host and 1 USB device EtherNet: C400/C600/C1000C only
Add-on communication module	Ethernet DH+™, DH-485, ControlNet	None	None	None
Serial communication	RS232: DF1 or DH-485	RS232: DF1 or DH-485	RS232: DF1 or DH-485	RS232: DF1, DH-485, multivendor options, RS485
Programming software	FactoryTalk View ME 6.0 or later ViewPoint web server 1.2 or later	FactoryTalk View ME 6.10 or later	FactoryTalk View ME 6.10 or later	Web-enabled software resident in terminal or PC-based software, DesignStation 2.0 or later
Operating system	Windows CE 6.0 operating system supports this features: <ul style="list-style-type: none"> FTP Server VNC client/server PDF reader Active X controls Third-party device support For additional functionality, order terminals with optional extended features: ⁽¹⁾ <ul style="list-style-type: none"> Internet Explorer web browser Remote desktop connection Media player File viewers for Microsoft Office Word, PowerPoint, and Excel WordPad text editor 	Windows CE 6.0 operating system supports this features: <ul style="list-style-type: none"> FTP Server VNC client/server PDF reader Active X controls Third-party device support The 600 color terminals are available with optional extended features: ⁽¹⁾ <ul style="list-style-type: none"> Internet Explorer web browser Media player File viewers for Microsoft Office Word, PowerPoint, and Excel WordPad text editor 	Windows CE 6.0 operating system supports this features: <ul style="list-style-type: none"> FTP Server VNC client/server PDF reader Active X controls Third-party device support 	None
Open or closed system	Open or closed desktop	Open or closed desktop	Open or closed desktop	Closed
Memory	512 MB nonvolatile/512 MB RAM	512MB nonvolatile/256 MB RAM	512MB nonvolatile/256 MB RAM	64 MB nonvolatile/64 MB RAM
External storage	Secure Digital (SD) card 2 USB flash drives	Secure Digital (SD) card 1 USB flash drive	Secure Digital (SD) card 1 USB flash drive	USB flash: C200/C300/C400 USB flash/SD card: C600/C1000
Power	AC or DC	AC or DC	DC	DC
Preferred controller	ControlLogix	CompactLogix	CompactLogix	MicroLogix, SLC, PowerFlex® 4 drive, Micro800
Capabilities	<ul style="list-style-type: none"> High memory capacity desktop access enabled or disabled backup and restore function Multi-network/multivendor connectivity Alarm messages (email alarms) Recipes Trending Data logging 	<ul style="list-style-type: none"> Multi-network/multivendor connectivity Alarm messages Recipes Trending Data logging 	<ul style="list-style-type: none"> Single controller 25 displays 200 alarm messages Recipes Trending Data logging 	<ul style="list-style-type: none"> Single device <20 displays <100 alarm messages Recipe upload/download Trending Data logging
Key differentiators	<ul style="list-style-type: none"> Windows CE desktop access Larger application size Pre-engineered faceplates for motion, process, and drives Native Logix addressing Direct referencing of Logix tags Modular hardware simplifies system integration and updates FactoryTalk View Machine Edition comes installed and activated 	<ul style="list-style-type: none"> Windows CE desktop access Pre-engineered faceplates for motion, process, and drives Native Logix addressing Direct referencing of Logix tags Modular hardware simplifies system integration and updates FactoryTalk View Machine Edition comes installed and activated 	<ul style="list-style-type: none"> Windows CE desktop access Single controller for midrange applications Pre-engineered faceplates for motion, process, and drives Native Logix addressing Direct referencing of Logix tags FactoryTalk View Machine Edition comes installed and activated 	<ul style="list-style-type: none"> Component-level device for small applications No programming software required if using the software in the terminal

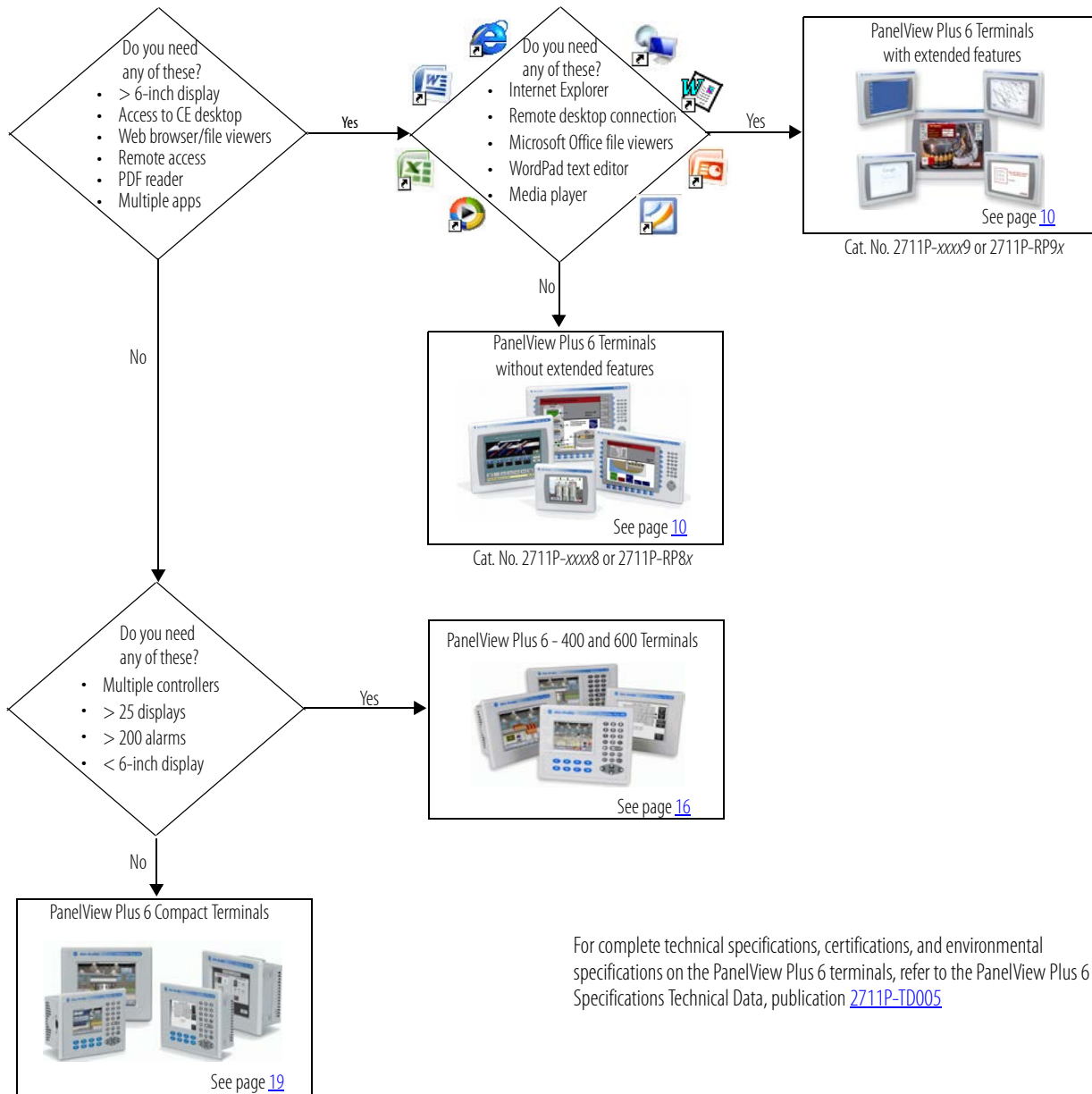
(1) Extended features are available by ordering catalog numbers ending in 9, for example, 2711P-Kxxx9, 2711P-Bxxx9, 2711P-Txxx9.

PanelView Plus 6 Terminals

PanelView Plus 6 HMI devices give operators a clear view into monitoring and controlling applications. With FactoryTalk View Machine Edition already installed and activated, development time is reduced. The PanelView Plus 6 family of products provides a broad range of rugged terminals that offer the following:

- Premier integration with the Integrated Architecture platform
- Real-time monitoring of a terminal's displays from a web browser
- Common development software
- Scalable 4 to 15-inch displays with a touch screen, keypad, or both

Selecting a PanelView Plus 6 Platform



For complete technical specifications, certifications, and environmental specifications on the PanelView Plus 6 terminals, refer to the PanelView Plus 6 Specifications Technical Data, publication [2711P-TD005](#)

Typical Configurations

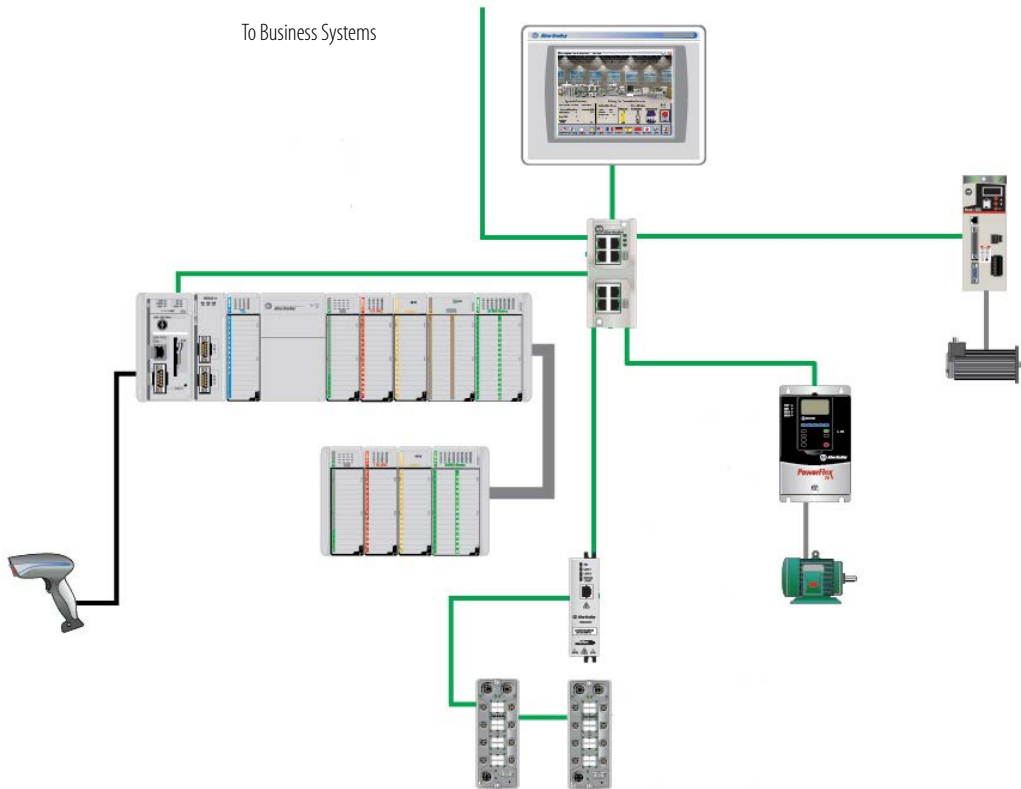
This figure shows a configuration where a PanelView Plus terminal is used with a Logix controller in standalone or machine-level mode using serial connectivity.

Standalone Machine



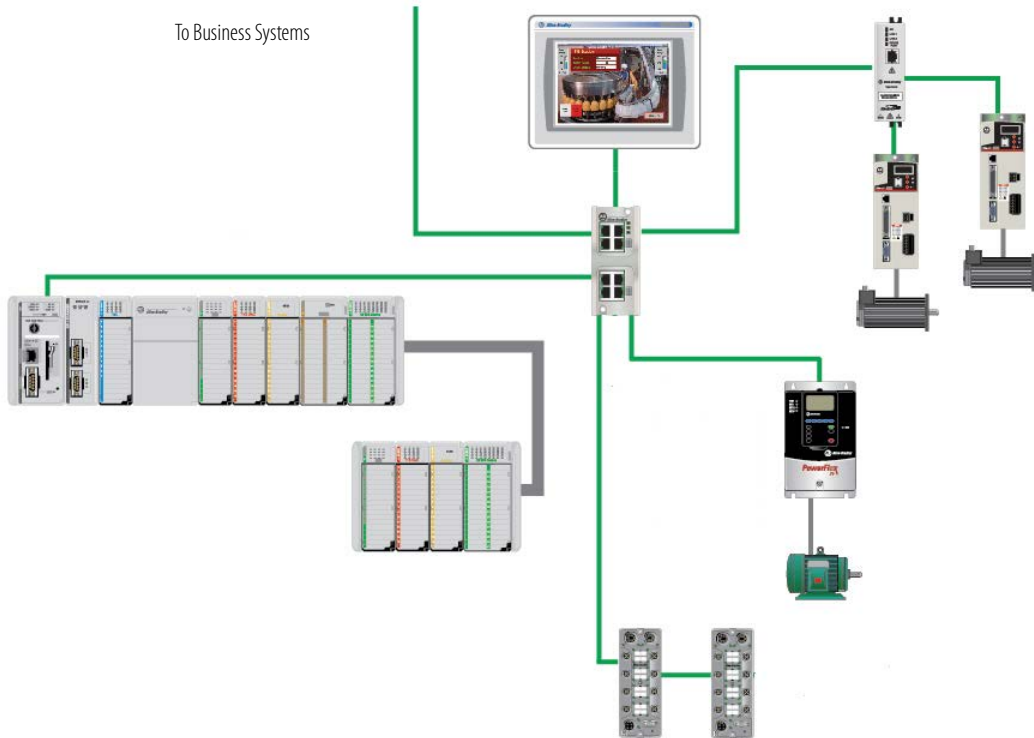
In this figure, a PanelView Plus Compact terminal and the 1769-L3x CompactLogix system provide an integrated solution for midsize applications. Typically, these applications are machine-level control applications that require smaller I/O quantities and more communication capabilities than serial connectivity.

Midsize Application



In this figure, a PanelView Plus 6 terminal communicates with all devices by using EtherNet/IP communication. A Logix controller along with a Kinetix® 300 servo drive offer a scalable power platform cost-sensitive applications, such as simple packaging machinery, indexing tables, automatic assembly equipment, tool changing machinery, and feed and withdrawal equipment.

Indexing Motion



PanelView Plus 6 Terminals - 700 to 1500

This platform use modular components with value-added options for flexible system configuration. These components are usable across the entire PanelView Plus 6 platform and install with minimal effort:

- Color display modules ranging from 6.5 to 15-inches in size with either key, touch screen, or combination key/touch-screen input
- Windows CE logic modules providing desktop access
- Optional communication modules for network communication



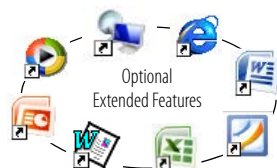
Configured terminals with a display module and logic module can be ordered as a single catalog number or as separate components for field installation.

A high-bright display for outdoor use, plus conformal-coated and marine-certified components, extend this platforms ability to operate in environments with even more stringent and varying requirements.

The core component of this platform is the high-performance logic module that runs a closed or open Windows CE desktop environment with optional, extended features and file viewers. System integrators and OEMs can configure and deploy systems that allow or restrict desktop access.

Logic Module Features

Features	Description
High memory capacity	512 MB nonvolatile flash and 512 MB RAM
Power input	AC or DC
Network interface	For optional DH+, DH-485, or ControlNet communication module
Communication ports	Ethernet, RS-232 serial
USB ports	2 USB host ports for connecting a USB mouse, keyboard, printer, and USB flash drives that are hot swappable 1 USB device port for connecting a host personal computer
Secure Digital (SD) card slot	Hot-swappable card slot supports 1784-SDx SD cards for transferring files, upgrading firmware, or logging data
Operating system	<p>All terminals run the Windows CE 6.0 operating system (OS) providing OS functionality needed for most users needs:</p> <ul style="list-style-type: none"> • FTP server • VNC client/server • PDF reader • Active X controls • Third-party device support <p>Additional functionality is available by ordering terminals with optional, extended features:</p> <ul style="list-style-type: none"> • Internet Explorer web browser • Remote desktop connection • Media player • Microsoft file viewers for PowerPoint, Excel, and Word • WordPad text editor
FactoryTalk View software	<ul style="list-style-type: none"> • FactoryTalk View Machine Edition Station (runtime) software, version 6.0 or later, is preloaded and activated on each terminal • Single license support for FactoryTalk ViewPoint software, version 1.2 or later, gives remote users access to a terminal's displays via standard web browser • HMI applications are developed with FactoryTalk View Studio for Machine Edition software, which is purchased separately



Product Selections

Bulletin	Input Type	Display Size	Display Type	Communication	Power	Operating System	Special Option
2711P-	K = Keypad T = Touch B = Keypad/Touch	7 = 6.5 in. 10 = 10.4 in. 12 = 12.1 in. 15 = 15 in.	C = Color	4 = Ethernet, RS-232, (2) USB	A = AC D = DC	8 = Windows CE 6.0 9 = Windows CE 6.0 with extended features	K = Conformal-coated

PanelView Plus 6 Terminals without Extended Features

Cat. No.			Display		Communication		Input Power	Memory RAM/Nonvolatile ⁽¹⁾
Keypad	Touch	Keypad/Touch	Size	Type	RS-232	Ethernet		
700 Model								
2711P-K7C4D8	2711P-T7C4D8	2711P-B7C4D8	6.5-in.	Color	•	•	DC	512 MB/512 MB
—	2711P-T7C4D8K	—			•	•	DC	512 MB/512 MB
2711P-K7C4A8	2711P-T7C4A8	2711P-B7C4A8			•	•	AC	512 MB/512 MB
1000 Model								
2711P-K10C4D8	2711P-T10C4D8	2711P-B10C4D8	10.4-in	Color	•	•	DC	512 MB/512 MB
2711P-K10C4A8	2711P-T10C4A8	2711P-B10C4A8			•	•	AC	512 MB/512 MB
1250 Model								
2711P-K12C4D8	2711P-T12C4D8	2711P-B12C4D8	12.1-in	Color	•	•	DC	512 MB/512 MB
—	2711P-T12C4D8K	—			•	•	DC	512 MB/512 MB
2711P-K12C4A8	2711P-T12C4A8	2711P-B12C4A8			•	•	AC	512 MB/512 MB
1500 Model								
2711P-K15C4D8	2711P-T15C4D8	2711P-B15C4D8	15-in.	Color	•	•	DC	512 MB/512 MB
2711P-K15C4A8	2711P-T15C4A8	2711P-B15C4A8			•	•	AC	512 MB/512 MB

(1) All terminals support FactoryTalk View Machine Edition Station software, version 6.0 or later, and the Windows CE 6.0 operating system without extended features and Microsoft file viewers.

PanelView Plus 6 Terminals with Extended Features

Cat. No.			Display		Communication		Input Power	Memory RAM/Nonvolatile ⁽¹⁾
Keypad	Touch	Keypad/Touch	Size	Type	RS-232	Ethernet		
700 Model								
2711P-K7C4D9	2711P-T7C4D9	2711P-B7C4D9	6.5-in.	Color	•	•	DC	512 MB/512 MB
2711P-K7C4A9	2711P-T7C4A9	2711P-B7C4A9			•	•	AC	512 MB/512 MB
1000 Model								
2711P-K10C4D9	2711P-T10C4D9	2711P-B10C4D9	10.4-in	Color	•	•	DC	512 MB/512 MB
2711P-K10C4A9	2711P-T10C4A9	2711P-B10C4A9			•	•	AC	512 MB/512 MB
1250 Model								
2711P-K12C4D9	2711P-T12C4D9	2711P-B12C4D9	12.1-in	Color	•	•	DC	512 MB/512 MB
2711P-K12C4A9	2711P-T12C4A9	2711P-B12C4A9			•	•	AC	512 MB/512 MB
1500 Model								
2711P-K15C4D9	2711P-T15C4D9	2711P-B15C4D9	15-in.	Color	•	•	DC	512 MB/512 MB
2711P-K15C4A9	2711P-T15C4A9	2711P-B15C4A9			•	•	AC	512 MB/512 MB

(1) All terminals support FactoryTalk View Machine Edition Station software, version 6.0 or later, and the Windows CE 6.0 operating system with extended features and Microsoft file viewers.

Accessories

The tables list accessories for the PanelView Plus 6 - 700 to 1500 terminals. Display modules, logic modules, and communication modules can be ordered as separate components for field installation.

Display Modules

Cat. No.	Input Type	Display	Marine Certified	Conformal Coated	Built-in Antiglare Overlay
700 Model					
2711P-RDK7C	Keypad	7-in. color			
2711P-RDK7CK	Keypad			•	
2711P-RDT7C	Touch				
2711P-RDT7CK	Touch			•	
2711P-RDT7CM	Touch		•		
2711P-RDB7C	Keypad/Touch				
2711P-RDB7CK	Keypad/Touch			•	
2711P-RDB7CM	Keypad/Touch		•		
1000 Model					
2711P-RDK10C	Keypad	10.4-in. color			
2711P-RDT10C	Touch				
2711P-RDT10CM	Touch		•		
2711P-RDB10C	Keypad/Touch				
2711P-RDB10CM	Keypad/Touch		•		
1250 Model					
2711P-RDK12C	Keypad	12.1-in. color			
2711P-RDK12CK	Keypad			•	
2711P-RDT12C	Touch				
2711P-RDT12CK	Touch			•	
2711P-RDT12AG	Touch				•
2711P-RDT12H ⁽¹⁾	Touch				
2711P-RDB12C	Keypad/Touch				
2711P-RDB12CK	Keypad/Touch			•	
1500 Model					
2711P-RDK15C	Keypad	15-in. color			
2711P-RDT15C	Touch				
2711P-RDT15AG	Touch				•
2711P-RDB15C	Keypad/Touch				

- (1) This catalog number is a high-bright display module, indicated by the H at end of cat. no., that is designed for outdoor applications. The high-bright display module can be used only with DC-powered logic modules.

Logic Modules

Cat. No.	Power Input	Memory RAM/Nonvolatile	Communication	Marine Certified	Conformal Coated	Included Software
Logic Modules without Extended Features						
2711P-RP8A	AC	512 MB/512 MB	<ul style="list-style-type: none">• Ethernet• RS-232• Network interface for communication module	•		<ul style="list-style-type: none">• Windows CE 6.0 operating system without extended features/file viewers• FactoryTalk View Machine Edition Station (runtime), version 6.0 or later• FactoryTalk ViewPoint software, version 1.2 or later
2711P-RP8D	DC	512 MB/512 MB		•		
2711P-RP8DK	DC	512 MB/512 MB		•	•	
Logic Modules with Extended Features						
2711P-RP9A	AC	512 MB/512 MB	<ul style="list-style-type: none">• Ethernet• RS-232• Network interface communication module	•		<ul style="list-style-type: none">• Windows CE 6.0 operating system with extended features/file viewers• FactoryTalk View Machine Edition Station (runtime), version 6.0 or later• FactoryTalk ViewPoint software, version 1.2 or later
2711P-RP9D	DC	512 MB/512 MB		•		
2711P-RP9DK	DC	512 MB/512 MB		•	•	

Communication Modules

Cat. No.	Communication				Conformal Coated	Marine Certified
	Ethernet	DH+	DH-485	ControlNet ⁽²⁾		
2711P-RN6		•	•			
2711P-RN6K		•	•		•	
2711P-RN15S				•		•
2711P-RN15SK				•	•	
2711P-RN20 ⁽¹⁾	•					

(1) All terminals have an Ethernet port. The cat. no. 2711P-RN20 module provides an additional Ethernet port.

(2) Scheduled and unscheduled communication.

Cables

Cat. No.	Description	Length
2711C-CBL-UU02	Programming cable that connects the USB device port of the terminal to a USB host port of a computer	2 m (6.5 ft)

Function Key Legend Kits

Cat. No.	PanelView Plus 6 Terminal Model ⁽¹⁾	Description
2711P-RFK7	700 keypad	Blank legend inserts and software
2711P-RFK10	1000 keypad	
2711P-RFK12	1250 keypad	
2711P-RFK15	1500 keypad	

(1) Applies to keypad and keypad/touch-screen terminals.

Secure Digital (SD) Cards

Cat. No.	Description
1784-SD1	1 GB Secure Digital (SD) card
1784-SD2	2 GB Secure Digital (SD) card
2711C-RCSD	USB to SD adapter for Secure Digital card (SD)

Antiglare Overlays

Cat. No. ⁽¹⁾	PanelView Plus 6 Terminal Model	Operator Input		
		Keypad	Touch	Key/Touch
2711P-RGK7	700	.		.
2711P-RGT7			.	
2711P-RGK10	1000	.		.
2711P-RGT10			.	
2711P-RGK12	1250	.		.
2711P-RGT12			.	
2711P-RGK15	1500	.		.
2711P-RGT15			.	

(1) Three overlays are shipped with each catalog number.

Solar Visor

Cat. No.	Description
2711P-RVT12	Solar visor for 1250 high-bright display module, cat. no. 2711P-RDT12H

Mounting Hardware

Cat. No.	Description	Quantity
2711P-RTMC	Mounting clips	8

Battery Replacement

Cat. No.	Description	Quantity
2711P-RY2032	Replacement battery CR2032 coin-cell equivalent battery	1

Power Supply and Power Terminal Blocks

Cat. No.	Description	Quantity
2711P-RSACDIN	DIN-rail power supply, AC-to-DC, 85...265V AC, 47...63 Hz	1
2711P-RTBAC3	AC power terminal block	10
2711P-RTBDC2	2-pin DC power terminal block	10

Backlight Replacements

Cat. No.	PanelView Plus 6 Display Module Size	Series	Number of Backlights
2711P-RL7C	700	A and B	1
2711P-RL7C2		C and D	1
2711P-RL10C	1000	A	1
2711P-RL10C2		B and C	1
2711P-RL12C	1250	A and B	2
2711P-RL12C2		C	1
2711P-RL15C	1500	B	2

Bezel Replacements

Cat. No.	PanelView Plus 6 Terminal Model	Operator Input		
		Keypad	Touch	Key/Touch
2711P-RBK7	700	.		
2711P-RBT7			.	
2711P-RBB7				.
2711P-RBK10	1000	.		
2711P-RBT10			.	
2711P-RBB10				.
2711P-RBK12	1250	.		
2711P-RBT12			.	
2711P-RBT12H ⁽¹⁾			.	
2711P-RBB12				.
2711P-RBK15	1500	.		
2711P-RBT15			.	
2711P-RBB15				.

(1) Applies to the cat. no. 2711P-RBT12H 1250 high-bright display module.

PanelView Plus 6 Terminals - 400 and 600

The smaller PanelView Plus 6 - 400 and 600 terminals combine the display, logic, memory, and power into one base unit:

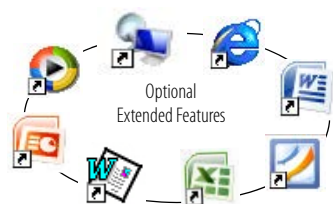
- The 400 model has a 3.5-in. color graphic display with keypad or combination key and touch input, or a grayscale display with keypad input.
- The 600 model has a 5.7-in. color or grayscale graphic display with keypad, touch screen, or combination keypad/touch-screen input.



This new generation of terminals runs the Windows CE 6.0 operating system similar to the PanelView Plus 6 - 700 to 1500 terminals. The terminals run HMI applications but also provide the ability to access the desktop. For users with more complex application requirements, the 600 color terminals can be ordered with optional, extended features and file viewers.

Terminal Features

Features	Description
High memory capacity	512 MB nonvolatile flash and 256 MB RAM
Power input	AC or DC
Communication ports	Units are available with one of these communication options: <ul style="list-style-type: none"> • RS-232 • Ethernet and RS-232 Separate communication modules are not supported.
USB ports	<ul style="list-style-type: none"> • 1 USB host ports for connecting a USB mouse, keyboard, printer, and USB flash drives that are hot swappable • 1 USB device port for connecting a host personal computer
Secure Digital (SD) card slot	Hot-swappable card slot supports 1784-SDx SD cards for transferring files, upgrading firmware, or logging data
Operating system	<p>All terminals run the Windows CE 6.0 operating system (OS) providing OS functionality needed for most users needs:</p> <ul style="list-style-type: none"> • FTP server • VNC client/server • PDF reader • Active X controls • Third-party device support <p>Additional functionality is available for the 600 terminals by ordering terminals with these optional, extended features:</p> <ul style="list-style-type: none"> • Internet Explorer web browser • Media player • Microsoft file viewers for PowerPoint, Excel, and Word • WordPad text editor
FactoryTalk View software	<ul style="list-style-type: none"> • FactoryTalk View Machine Edition Station (runtime) software, version 6.10 or later, is preloaded and activated on each terminal • HMI applications are developed with FactoryTalk View Studio for Machine Edition software, which is purchased separately
Reset and default switches	Provide easy access to diagnostic and repair operations



Product Selections

Bulletin	Input Type	Display Size	Display Type	Communication	Power	Operating System
2711P-	K = Keypad B = Keypad/Touch T = Touch	4 = 3.5 6 = 5.7 in.	C = Color M = Grayscale	5 = RS-232, USB ports 20 = Ethernet, RS-232, USB ports	A = AC D = DC	8 = Windows CE 6.0 9 = Windows CE 6.0 with extended features and file viewers

PanelView Plus 6 - 400 Terminals without Extended Features

Cat. No.		Display		Communication		USB Ports		Input Power	System Memory (MB) ⁽¹⁾	
Keypad	Keypad/Touch	Size	Type	RS-232	Ethernet	Host	Device		RAM	Nonvolatile
2711P-K4M5A8	—	3.5-in.	Grayscale	•		•	•	AC	256	512
2711P-K4M5D8	—			•		•	•	DC	256	512
2711P-K4M20A8	—			•	•	•	•	AC	256	512
2711P-K4M20D8	—			•	•	•	•	DC	256	512
2711P-K4C5A8	2711P-B4C5A8	3.5-in.	Color	•		•	•	AC	256	512
2711P-K4C5D8	2711P-B4C5D8			•		•	•	DC	256	512
2711P-K4C20A8	2711P-B4C20A8			•	•	•	•	AC	256	512
2711P-K4C20D8	2711P-B4C20D8			•	•	•	•	DC	256	512

(1) All terminals support FactoryTalk View Machine Edition Station software, version 6.10 or later, and the Windows CE 6.0 operating system without extended features and Microsoft file viewers.

PanelView Plus 6 - 600 Terminals without Extended Features

Cat. No.			Display		Communication		USB Ports		Input Power	System Memory (MB) ⁽¹⁾	
Keypad	Touch	Keypad/Touch	Size	Type	RS-232	Ethernet	Host	Device		RAM	Nonvolatile
2711P-K6M5A8	2711P-T6M5A8	2711P-B6M5A8	5.7-in.	Grayscale	•		•	•	AC	256	512
2711P-K6M5D8	2711P-T6M5D8	2711P-B6M5D8			•		•	•	DC	256	512
2711P-K6M20A8	2711P-T6M20A8	2711P-B6M20A8			•	•	•	•	AC	256	512
2711P-K6M20D8	2711P-T6M20D8	2711P-B6M20D8			•	•	•	•	DC	256	512
2711P-K6C5A8	2711P-T6C5A8	2711P-B6C5A8	5.7-in.	Color TFT	•		•	•	AC	256	512
2711P-K6C5D8	2711P-T6C5D8	2711P-B6C5D8			•		•	•	DC	256	512
2711P-K6C20A8	2711P-T6C20A8	2711P-B6C20A8			•	•	•	•	AC	256	512
2711P-K6C20D8	2711P-T6C20D8	2711P-B6C20D8			•	•	•	•	DC	256	512

(1) All terminals support FactoryTalk View Machine Edition Station software, version 6.10 or later, and the Windows CE 6.0 operating system without extended features and Microsoft file viewers.

PanelView Plus 6 - 600 Terminals with Extended Features

Cat. No.			Display		Communication		USB Ports		Input Power	System Memory (MB) ⁽¹⁾	
Keypad	Touch	Keypad/Touch	Size	Type	RS-232	Ethernet	Host	Device		RAM	Nonvolatile
2711P-K6C5A9	2711P-T6C5A9	2711P-B6C5A9	5.7-in.	Color TFT	•		•	•	AC	256	512
2711P-K6C5D9	2711P-T6C5D9	2711P-B6C5D9			•		•	•	DC	256	512
2711P-K6C20A9	2711P-T6C20A9	2711P-B6C20A9			•	•	•	•	AC	256	512
2711P-K6C20D9	2711P-T6C20D9	2711P-B6C20D9			•	•	•	•	DC	256	512

(1) All terminals support FactoryTalk View Machine Edition Station software, version 6.10 or later, and the Windows CE 6.0 operating system with extended features and Microsoft file viewers.

Accessories

The tables list accessories for the PanelView Plus 6 - 400 and 600 terminals.

Antiglare Overlays

Cat. No. ⁽¹⁾	Terminal Model	Input Type		
		Keypad	Touch	Key/Touch
2711P-RGB4	400 grayscale or color	•		•
2711P-RGK6	600 grayscale or color	•		•
2711P-RGT6			•	

(1) Three overlays are shipped with each catalog number.

Secure Digital (SD) Cards

Cat. No.	Description
1784-SD1	1 GB SD card
1784-SD2	2 GB SD card
2711C-RSCD	USB to SD adapter for SD card

Power Supply and Power Terminal Blocks

Cat. No.	Description	Quantity
2711P-RSACDIN	DIN-rail power supply, AC-to-DC, 85...265V AC, 47...63 Hz	1
2711P-6RSA	AC power module converts a DC-powered terminal to AC power	1
2711P-RVAC	AC power terminal block	10
2711P-TBDC	DC power terminal block	10

Mounting Hardware

Cat. No.	Description	Quantity
2711P-RTFC	Mounting levers	8

Cables

Cat. No.	Description	Length
6189V-USBCBL2	Programming cable that connects the USB device port of the terminal to a USB host port of a computer	1.8 m (6 ft)

Function Key Legend Inserts

Cat. No.	Terminal Model	Includes
2711P-RFK6	600 keypad and keypad/touch	Blank legend inserts and software

Replacement Battery

Cat. No.	Description	Quantity
2711P-RY2032	Replacement battery CR2032 coin-cell equivalent battery	1

PanelView Plus 6 Compact Terminals

The next generation PanelView Plus 6 Compact 400 and 600 terminals offer just the right hardware and software functionality to meet the needs of midsize applications. Any application created for a compact terminal is also compatible with other PanelView Plus 6 terminals. Key features include the following:

- Preferred HMI integration with CompactLogix controllers
- RS-232 serial port, Ethernet port, USB port, DC power, and SD card slot
- Serial and Ethernet communication
- Connection to single controller by using either RSLinx[®] Enterprise software, version 5.51 or later, or KEPServer software
- 25 displays and 200 alarm messages supported in the FactoryTalk View Compact Machine Edition application
- Fixed hardware configurations without the addition or replacement of modular components



Product Selections

This table lists the fixed hardware configurations available for the PanelView Plus 6 Compact terminals.

PanelView Plus 6 Compact Terminals

Cat. No.	Input Type	Display		Communication		Input Power	Memory (MB)	
		Size	Type	RS-232	Ethernet		RAM	Nonvolatile
2711PC-K4M20D8	Keypad	3.5-in.	Grayscale	•	•	DC	256	512
2711PC-B4C20D8	Keypad/Touch	3.5-in.	Color	•	•	DC	256	512
2711PC-T6M20D8	Touch	5.7-in.	Grayscale	•	•	DC	256	512
2711PC-T6C20D8	Touch	5.7-in.	Color	•	•	DC	256	512

Accessories

The tables list accessories for the PanelView Plus 6 Compact terminals.

Secure Digital (SD) Cards

Cat. No.	Description
1784-SD1	1 GB SD card
1784-SD2	2 GB SD card
2711C-RSCD	USB to SD adapter for SD card

Antiglare Overlays

Cat. No. ⁽¹⁾	Terminal Model	Input Type		
		Keypad	Touch	Key/Touch
2711P-RGB4	400 grayscale or color	.		.
2711P-RGT6	600 grayscale or color		.	

(1) Three overlays are shipped with each catalog number.

Mounting Hardware

Cat. No.	Description	Quantity
2711P-RTFC	Mounting levers	8

Power Supply and Power Terminal Blocks

Cat. No.	Description	Quantity
2711P-RSACDIN	DIN-rail power supply, AC-to-DC, 85...265V AC, 47...63 Hz	1
2711P-6RSA	AC power module converts a DC-powered terminal to AC power	1
2711P-TBDC	DC power terminal block	10

Cables

Cat. No.	Description	Length
6189V-USBCBL2	Programming cable that connects the USB device port of the terminal to a USB host port of a computer	1.8 m (6 ft)

Replacement Battery

Cat. No.	Description	Quantity
2711P-RY2032	Replacement battery CR2032 coin-cell equivalent battery	1

Communication Cables

The tables list runtime communication cables for PanelView Plus 6 (400, 600, 700, 1000, 1250, 1500) terminals. The PanelView Plus 6 Compact terminals use the same cables as the PanelView Plus 6 - 400 and 600 terminals.

All PanelView Plus 6 terminals use a standard Ethernet cable for application transfers between a computer and the terminal.

Communication Cables: PanelView Plus 6 Terminals to SLC Controllers

Protocol	PanelView Plus 6 Comm Port 400, 600, 700, 1000, 1250, 1500	SLC 500, 5/01, 5/02 CH1 RJ45 (DH-485)	SLC 5/03, 5/04, 5/05 CH0 (9-pin RS-232) (DF1 or DH-485)	SLC 5/03 CH1 (RJ45) (DH-485)	SLC 5/04 CH1 (DH+)	SLC 5/05 CH1 (ENET)
DF1	RS-232 port All terminals	—	2711-NC13 (5 m/16 ft) 2711-NC14 (10 m/32 ft)	—	—	—
DH-485	RS-232 port All terminals	Use AIC+ module (1761-NET-AIC) to connect to port 1 or 2	2711-NC13 (5 m/16 ft) 2711-NC14 (10 m/32 ft)	Use AIC+ Module (1761-NET-AIC) to connect to port 1 or 2	—	—
	DH-485 port 700 to 1500 terminals only Requires 2711P-RN6 or 2711P-RN6K	1761-CBL-AS03 (3 m/10 ft) 1761-CBL-AS09 (9 m/30 ft)	Use AIC+ module (1761-NET-AIC) to connect to port 3	1761-CBL-AS03 (3 m/10 ft) 1761-CBL-AS09 (9 m/30 ft)	—	—
EtherNet/IP	EtherNet/IP port All terminals 2711P-RN20 provides second Ethernet port on 700 to 1500 terminals only	—	Use 1761-NET-ENI module with Ethernet cable	—	—	1585J-M type cable or 2711P- CBL-EX04 (4 m/14 ft)
ControlNet	ControlNet port 700 to 1500 terminals only Requires 2711P-RN15S or 2711P-RN15SK	—	—	—	—	—
DH+	DH+ port 700 to 1500 terminals only Requires 2711P-RN6 or 2711P-RN6K	—	—	—	Shielded twinaial cable (1770-CD)	—

Communication Cables: PanelView Plus 6 Terminals to PLC-5 and MicroLogix Controllers

Protocol	PanelView Plus 6 Comm Port 400, 600, 700, 1000, 1250, 1500	PLC-5®, PLC-5C, PLC-5E CH0 (25-pin RS-232) (DF1)	MicroLogix 1400, 1500LRP CH1/CH2 (9-pin RS-232) (DF1 or DH-485)	MicroLogix 1000, 1100, 1200, 1400, 1500LSP CH0 (8-pin Mini DIN) (DF1 or DH-485)	MicroLogix 1100, 1400 Ethernet
DF1	RS-232 port All terminals	2711-NC13 (5 m/16 ft) 2711-NC14 (10 m/32 ft) (9-to-25 pin adapter required)	2711-NC13 (5 m/16 ft) 2711-NC14 (10 m/32 ft)	2711-NC21 (5 m/16 ft) 2711-NC22 (15 m/49 ft) ⁽¹⁾	—
DH-485	RS-232 port All terminals	—	2711-NC13 (5 m/16 ft) 2711-NC14 (10 m/32 ft)	2711-NC21 (5 m/16 ft) 2711-NC22 (15 m/49 ft)	—
	DH-485 port 700 to 1500 terminals only Requires 2711P-RN6 or 2711P-RN6K	—	—	Use AIC+ module (1761-NET-AIC) to connect to port 3	—
EtherNet/IP	EtherNet/IP port All terminals 2711P-RN20 provides second Ethernet port on 700 to 1500 terminals only	To PLC-5E with 1585J-M type cable or 2711P- CBL-EX04 (4 m/14 ft)	Use 1761-NET-ENI module with Ethernet cable		1585J-M type cable or 2711P- CBL-EX04 (4 m/14 ft)
ControlNet	ControlNet port 700 to 1500 terminals only Requires 2711P-RN15S or 2711P-RN15SK	To PLC-5C with ControlNet cable	—	—	—
DH+	DH+ port 700 to 1500 terminals only Requires 2711P-RN6 or 2711P-RN6K	Shielded twinaxial cable (1770-CD)	—	—	—

(1) The AIC+ module is recommended for isolation purposes when the terminal and controller are not on same power supply.

Communication Cables: PanelView Plus 6 Terminals to Logix Controllers

Protocol	PanelView Plus 6 Comm Port 400, 600, 700, 1000, 1250, 1500	ControlLogix CH0 (9-pin RS-232) (DF1)	CompactLogix CH0 (9-pin RS-232) (DF1 or DH-485)
DF1	RS-232 port All terminals	2711-NC13 (5 m/16 ft) 2711-NC14 (10 m/32 ft) 2706-NC13 (3 m/10 ft)	
DH-485	RS-232 port All terminals	—	2711-NC13 (5 m/16 ft) 2711-NC14 (10 m/32 ft) 2706-NC13 (3 m/10 ft)
	DH-485 port 700 to 1500 terminals only Requires 2711P-RN6, 2711P-RN6K	—	Use AIC+ module (1761-NET-AIC) to connect to port 3
EtherNet/IP	EtherNet/IP port All terminals 2711P-RN20 provides second Ethernet port on 700 to 1500 terminals only	Use 1756-EN2T or 1756-ENBT module with 1585J-M type cable or 2711P-CBL-EX04 (4 m/14 ft)	To 1769-L35E, 1769-L23E, 1769-L32E, or 1768-ENBT module with 1585J-M type cable or 2711P-CBL-EX04 (4 m/14 ft)
ControlNet	ControlNet port 700 to 1500 terminals only Requires 2711P-RN15S or 2711P-RN15SK	Use 1756-CNB module with ControlNet cable	1769-L35CR, 1769-L32C, 1768-CNB, or 1768-CNBR with ControlNet cable
DH+	DH+ port 700 to 1500 terminals only Requires 2711P-RN6 or 2711P-RN6K	Use 1756-DHRIO module with shielded twinaxial cable (1770-CD)	—

Communication Cables: PanelView Plus 6 Terminals to Interface Modules

Protocol	PanelView Plus 6 Comm Port 400, 600 700, 1000, 1250, 1500	1747-AIC	1761-NET-AIC			1761-NET-ENI
			Port 1 (9-pin)	Port 2 (8-pin Mini DIN)	Port 3 (DH-485)	Port 2 (8-pin Mini DIN)
DF1	RS-232 port All terminals	—	2711-NC13 (5 m/16 ft) 2711-NC14 (10 m/32 ft)	2711-NC21 (5 m/16 ft) 2711-NC22 (15 m/49 ft) Null modem required	—	1761-CBL-AP00 (5 m) 1761-CBL-PM02 (2 m) 2711-CBL-PM05 (5 m) 2711-CBL-PM10 (10 m)
DH-485	RS-232 port All terminals	—	2711-NC13 (5 m/16 ft) 2711-NC14 (10 m/32 ft)	2711-NC21 (5 m/16 ft) 2711-NC22 (15 m/49 ft) Null modem required	—	—
	DH-485 port 700 to 1500 terminals only Requires 2711P-RN6 or 2711P-RN6K	Direct connection to single AIC with Belden 9842 cable ⁽¹⁾	—	—	Direct connection to single AIC+ with Belden 9842 cable ⁽¹⁾	—

(1) Use the serial port on the PanelView Plus 6 terminal with an AIC+ module for a DH-485 network solution.

PanelView Plus 6 Migration Path

The PanelView Plus 6 platforms provide a clear migration path for replacing older terminals. When migrating to a new platform, consider both the display size and the unit size. PanelView Plus 6 terminals use the same panel cutouts as existing PanelView products, yet offer a larger display. For instance, a PanelView Plus 6, 1250 terminal with a 12.1-inch display fits into the same cutout as a PanelView 1000 or 1000e with a 10.4-inch display. When choosing a terminal with the same display size, adapter plates are used to adapt the cutout of the new terminal.

PanelView Plus 6 Replacement Terminals

PanelView Standard Terminal	PanelView Plus Replacement Terminal	Adapter Plate Required	Adapter Plate Cat. No.
PanelView Standard 300 or 300 Micro	None available ⁽¹⁾	—	—
PanelView 550 or 600 touch	PanelView Plus 6 or PanelView Plus 6 Compact 400 keypad or keypad/touch PanelView Plus or PanelView Plus Compact 600 touch	No	—
PanelView 550 keypad PanelView 550 keypad/touch	PanelView Plus 6, 600 keypad or keypad/touch PanelView Plus 6 or PanelView Plus 6 Compact 400 keypad or keypad/touch PanelView Plus 6 or PanelView Plus 6 Compact 600 touch	No Yes	— 2711P-RAK4
PanelView 600 keypad PanelView 600 keypad/touch	PanelView Plus 6, 600 keypad or keypad/touch PanelView Plus 6, 700 keypad or keypad/touch	Yes No	2711P-RAK6 —
PanelView 900 keypad	PanelView Plus 6, 700 keypad or keypad/touch PanelView Plus 6, 1000 keypad or keypad/touch	Yes No	2711P-RAK7 —
PanelView 900 touch	PanelView Plus 6, 700 touch PanelView Plus 6 or PanelView Plus Compact 1000 touch	Yes No	2711P-RAT7 —
PanelView 1000, 1000e keypad	PanelView Plus 6, 1000 keypad or keypad/touch PanelView Plus 6, 1250 keypad or keypad/touch	Yes No	2711P-RAK10 —
PanelView 1000, 1000e touch	PanelView Plus 6 or PanelView Plus Compact 1000 touch PanelView Plus 6, 1250 touch	Yes No	2711P-RAT10 —
PanelView 1400 keypad	PanelView Plus 6, 1250 keypad or keypad/touch PanelView Plus 6, 1500 keypad or keypad/touch	Yes No	2711P-RAK12S —
PanelView 1400 touch	PanelView Plus 6, 1250 touch PanelView Plus 6, 1500 touch	Yes No	2711P-RAT12S —
PanelView 1400e keypad	PanelView Plus 6, 1500 keypad or keypad/touch ⁽²⁾ PanelView Plus 6, 1250 keypad or keypad/touch	Yes Yes	2711P-RAK15 2711P-RAK12E
PanelView 1400e touch	PanelView Plus 6, 1500 touch ⁽²⁾ PanelView Plus 6, 1250 touch	Yes Yes	2711P-RAT15 2711P-RAT12E
PanelView 1200, 1200e keypad	PanelView Plus 6, 1250 keypad ⁽²⁾	Yes	2711P-RAK12E
PanelView 1200, 1200e touch	PanelView Plus 6, 1250 touch ⁽³⁾	Yes	2711P-RAT12E2

(1) Replace the PanelView Standard 300 or 300 Micro with a PanelView Plus 6 - 400 keypad terminal by increasing the size of the current panel cutout.

(2) Adapter plate required for stud-mounted terminals.

(3) Requires modification of panel cutout.

PanelView Component Terminals



When you need an essential component but with a reduced cost, look to the PanelView Component family of operator interface devices. This platform features a full line of 2 to 10-inch displays. Preferred integration with Allen-Bradley® MicroLogix, Micro800, and SLC 500 families of logic controllers offers a control and visualization solution for variety of applications. Plus you can connect directly to component devices such as the PowerFlex 4 drives. Built-in programming software and integrated mounting clamps help to improve productivity and maintenance.

Other key features include the ability to do the following:

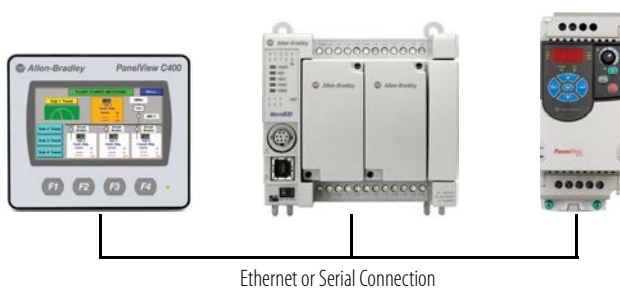
- Secure information on screens with user name and password protection.
- Display information in languages including Chinese, Portuguese, French, Italian, German, Spanish, and Korean.
- Alert operators with alarm messages that include embedded variables and an alarm status/history.
- Upload and download groups of data or parameter settings within the recipe feature.

For complete technical specifications, certifications, and environmental specifications on the PanelView Component terminals, refer to the PanelView Component Specifications Technical Data, publication [2711C-TD001](#).

Software

The built-in programming software on the terminal reduces the need for installation on the computer. Simply connect to the PanelView Component through and Ethernet or USB cable and open a web browser. You can also download programming software, PanelView Component DesignStation, to your computer for offline application design.

Typical Configuration



Communicate to MicroLogix, Micro800, and SLC controllers via serial networks on all terminals and Ethernet on the 4, 6, and 10-inch displays. Multi-vendor communication includes Modbus, Modbus/TCP, and Siemens MPI.

Product Selections

Bulletin	Input Type	Display Size	Display Type
2711C-	F = Function keys K = Keypad and function keys T = Touch screen	2 = 2 in. 3 = 3 in. 4 = 4 in. 6 = 6 in. 10 = 10 in.	C = Color M = Grayscale T = TFT Color

PanelView Component Terminals

Cat. No	Display		Input Type	Communication		Power
	Size	Type		Serial ⁽¹⁾	Ethernet	
C200 Model						
2711C-F2M	2-in.	Monochrome transfective STN	4 function keys	•	—	24V DC
2711C-K2M			10 function keys and numeric keypad	•	—	24V DC
C300 Model						
2711C-T3M	3-in.	Monochrome transfective STN	Touch screen	•	—	24V DC
2711C-K3M			10 function keys and numeric keypad	•	—	24V DC
C400 Model						
2711C-T4T	4-in.	Color transmissive TFT	Touch screen and 4 function keys	•	•	24V DC
C600 Model						
2711C-T6M	6 in.	Monochrome transmissive FSTN	Touch screen	•	•	24V DC
2711C-T6T		Color transmissive TFT	Touch screen	•	•	24V DC
C1000 Model						
2711C-T10C	10 in.	Color transmissive TFT	Touch screen	•	•	24V DC

(1) Serial refers to RS-232 (DF1), RS-232 (DH-485), RS-485 communication.

Product Accessories

The tables list accessories for the PanelView Component terminals.

Antiglare Overlays

Cat. No. ⁽¹⁾	PanelView Component Model	Input Type		
		Function Key	Numeric Keypad	Touch
2711C-RG2F	C200	•		
	C300			•
2711C-RG2K	C200		•	
	C300		•	
2711C-RG6T	C600			•
2711C-RG10T	C1000			•

(1) Three overlays are shipped with each catalog number.

Memory Cards

Cat. No.	Description
2711C-RCSD	USB to Secure Digital (SD) adapter for SD card

Power Terminal Blocks

Cat. No.	Description	Quantity
2711C-RJ422	RS-422/RS-485 connector with resistor	10
2711-TBDC	DC power terminal block	10

Power Supply

Cat. No.	Description	Quantity
2711P-RSACDIN	DIN-rail mount AC-to-DC power supply, 85...265V AC, 47...63 Hz	1

Communication Cables

Use these cables for connecting PanelView Component terminals.

Cables for PanelView Component Terminals

Cat. No.	Description	For Use With
2711C-CBL-UU02	USB-A host to USB-B device cable, 2 m (6.5 ft)	C200, C300, C400, C600, C1000
2711P-CBL-EX04	Ethernet crossover CAT5 cable, 4.3 m (14 ft)	C400, C600, C1000
2711C-RCSD	USB to SD adapter with secure digital (SD) card	C200, C300, C400, C600, C1000
1747-CP3	Serial 9-pin D-shell to 9-pin D-shell null modem cable, 3 m (10 ft)	C200, C300, C400, C600, C1000
1761-CBL-PM02	Serial 9-pin D-shell to 8-pin mini DIN cable, 2 m (6.5 ft)	C200, C300, C400, C600, C1000
2711C-CBL-AB03	RS-485 5-pin to RJ45 cable	C200, C300, C600, C1000

This table provides a summary of connections to MicroLogix controllers.

Communication Cables: PanelView Component Terminals to MicroLogix Controllers

Protocol	PanelView Component Port	MicroLogix (8-pin Mini DIN) 1000, 1100, 1400, 1200LSP, 1500LSP (CH0)	MicroLogix (9-pin D-shell) 1500LRP (CH1)	MicroLogix 1100/1400 RS485 (1763-NC01)	MicroLogix 1100, 1400 Ethernet
DF1	RS-232	1761-CBL-PM002	1747-CP3	—	—
DH-485	RS-232	1761-CBL-PM002	1747-CP3	Use AIC+ module (1761-NET-AIC) connect to port 3	—
	RS-485 ⁽¹⁾	—	—	Belden 3106A or #9842 or equivalent	—
Modbus	RS-232	1761-CBL-PM002	1747-CP3	Use AIC+ module (1761-NET-AIC) connect to port 3	—
EtherNet (MicroLogix/ENI)2	Ethernet	—	—	—	CAT5 Ethernet

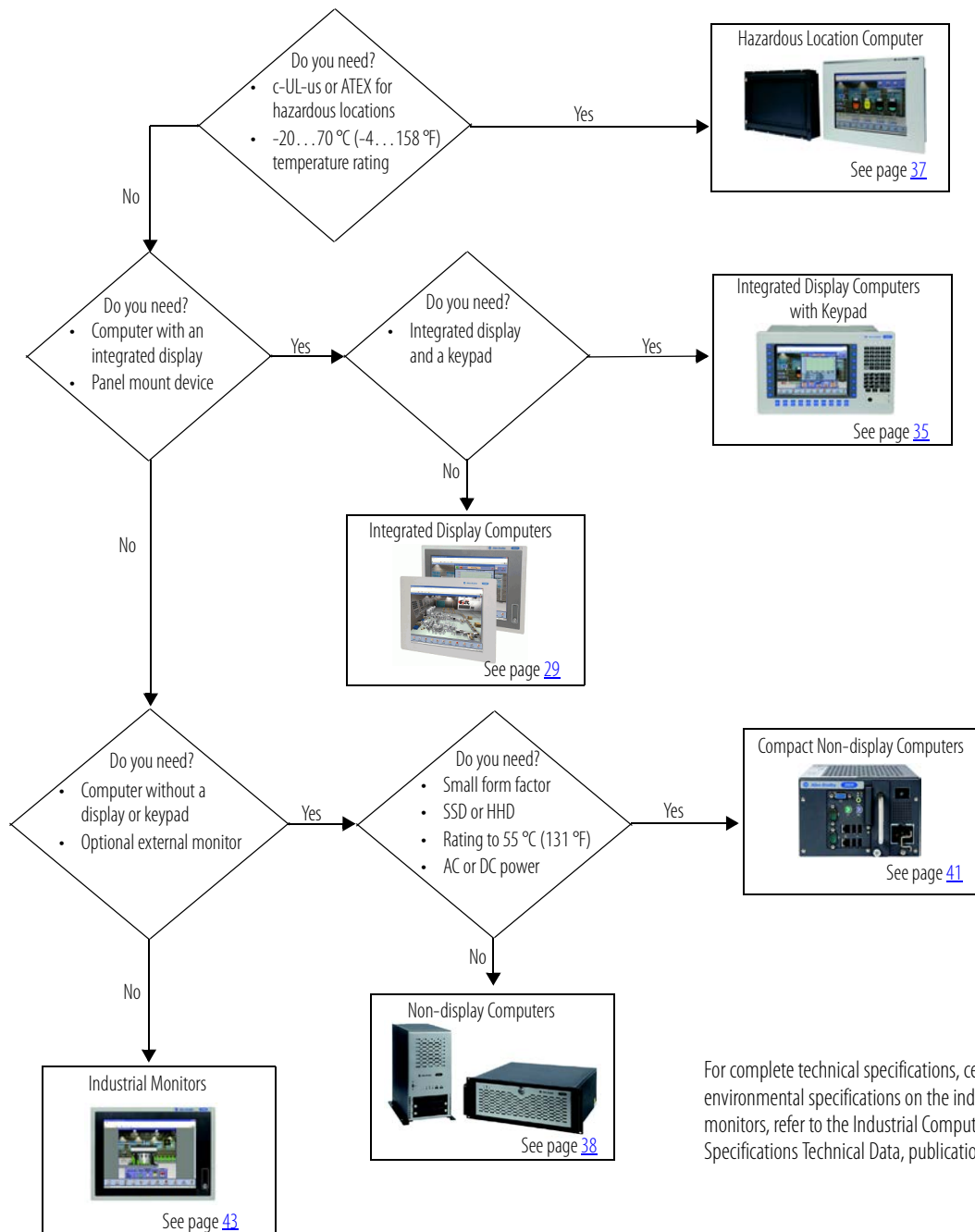
(1) RS485 is non-isolated and is recommended for connecting to only one device with an isolated port.

Industrial Computers and Monitors

The industrial computers and monitors are built with high-grade components that are critical to the safety and success of applications in demanding industrial environments:

- Seamless integration with the full suite of Rockwell Software solutions, including the Integrated Architecture platform and FactoryTalk View software
- Utilities for system backup and restore, hardware analysis, and troubleshooting
- Unit-level immediate exchange program to reduce downtime

Selecting an Industrial Computer

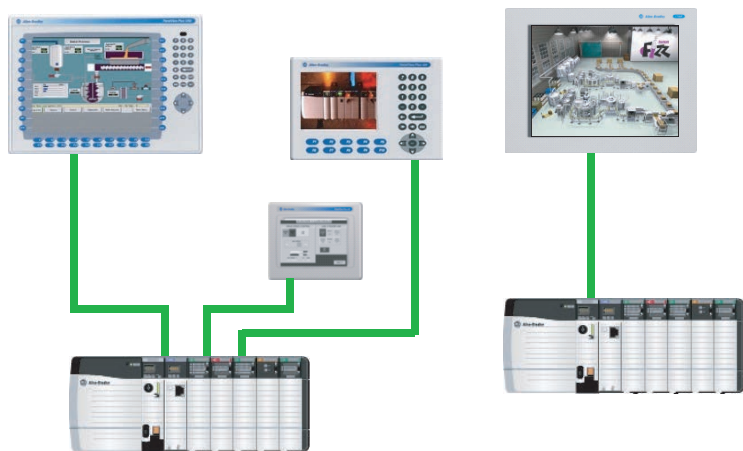


For complete technical specifications, certifications, and environmental specifications on the industrial computers and monitors, refer to the Industrial Computers and Monitors Specifications Technical Data, publication [IC-TD001](#).

Typical Configurations

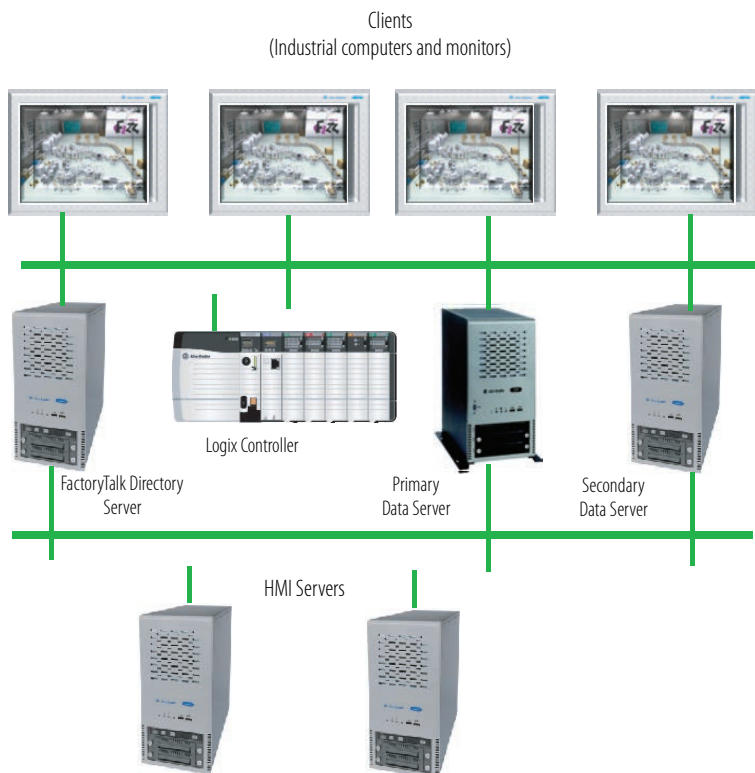
This configuration illustrates a typical station-level HMI showing a FactoryTalk View ME or FactoryTalk View SE local network with either PanelView Plus terminals, industrial computers and monitors, and a logix controller.

FactoryTalk View Station Level HMI



This configuration provides a typical site-level HMI showing a FactoryTalk View SE network with industrial computers and monitors and a logix controller.

FactoryTalk View Site Level HMI



Integrated Display Computers



When you require a view into your operations, the integrated display computers serve as the foundation for visualization control of processes and machinery by using information displays to repair, maintain, or start a process.

This platform comes with a continuous-duty, hard-disk drive or a mission-critical, solid-state drive that is free of moving parts. A fanless design with increased temperature ratings and low-voltage processors add to its ruggedness. Plus, you can choose a standard or performance package to get the computing power you need.

The integrated display computers provide seamless integration with the full suite of Rockwell Software solutions, including the Integrated Architecture platform and FactoryTalk View software.

Performance Models

Performance models are equipped with features designed to meet the most demanding integrated display computer needs:

- Hard-disk drive or solid-state drive with DC power input option
- 12-, 15-, or 17-inch display options
- Lockable front-accessible USB 2.0 port
- Core Duo processor and expandable memory up to 4 GB
- Expansion options through a PCI slot and an accessory kit for adding PCI express or additional PCI
- Two CompactFlash slots
- Rated to 55 °C (131 °F) for 12- and 15-inch displays and 50 °C (122 °F) for 17-inch displays
- Flush panel design minimizes debris buildup

Standard Models

Standard models provide the essential features you need at the right value for most visual interface and basic information applications:

- Hard-disk drive or solid-state drive with DC power input option
- 12-, 15-, or 17-inch display options
- Celeron M processor with expandable memory to 4 GB
- One CompactFlash slot
- Rated to 50 °C (122 °F) for all displays

Product Selections

Bulletin	Display Size	Input Type	Package	Operating System	Power	Bezel Type
6181P- HDD drive	2 = No display 12 = 12.1 in. 15 = 15 in. 17 = 17 in.	N = No touch screen T = Touch screen	S = Standard P = Performance	7 = Windows 7 Professional (32-bit) XP = Windows XP Professional SP3	Default = AC D = DC	Default = Aluminum SS = Stainless steel

6181P Integrated Display Computers with Hard-disk Drives (HDD)

Cat. No.	Display Size	Touch Screen	Package	Windows Operating System	Power	Bezel
1200P Model						
6181P-12TPW7	12.1-in. TFT display	•	Performance	Windows 7 Professional (32-bit)	AC	Aluminum
6181P-12TPW7DC		•	Performance		DC	
6181P-12NSXP		—	Standard	Windows XP Professional SP3	AC	
6181P-12NPXP		—	Performance		AC	
6181P-12TSXP		•	Standard		AC	
6181P-12TPXP		•	Performance		AC	
6181P-12TPXPDC		•	Performance		DC	
6181P-2PW7	No display	—	Performance	Windows 7 Professional (32-bit)	AC	
6181P-2PW7DC		—	Performance		DC	
6181P-2PXP		—	Performance	Windows XP Professional SP3	AC	
6181P-2PXPDC		—	Performance		DC	
1500P Model						
6181P-15TPW7	15-in. TFT display	•	Performance	Windows 7 Professional (32-bit)	AC	Aluminum
6181P-15TPW7DC		•	Performance		DC	
6181P-15TPW7SS		•	Performance		AC	Stainless Steel
6181P-15NSXP		—	Standard	Windows XP Professional SP3	AC	Aluminum
6181P-15NPXP		—	Performance		AC	
6181P-15TSXP		•	Standard		AC	
6181P-15TPXP		•	Performance		AC	
6181P-15TPXPDC		•	Performance		DC	
6181P-15TPXPSS		•	Performance		AC	Stainless steel

6181P Integrated Display Computers with Hard-disk Drives (HDD)

Cat. No.	Display Size	Touch Screen	Package	Windows Operating System	Power	Bezel
1700P Model						
6181P-17TPW7	17-in. TFT display	•	Performance	Windows 7 Professional (32-bit)	AC	Aluminum
6181P-17TPW7DC		•	Performance		DC	
6181P-17TPW7SS		•	Performance		AC	Stainless Steel
6181P-17NSXP	17-in. TFT display	—	Standard	Windows XP Professional SP3	AC	Aluminum
6181P-17NPXP		—	Performance		AC	
6181P-17TSXP		•	Standard		AC	
6181P-17TPXP		•	Performance		AC	
6181P-17TPXPDC		•	Performance		DC	
6181P-17TPXPSS		•	Performance		AC	Stainless steel

Package Features: 6181P Integrated Display Computers with HDD

Package Features	Standard	Performance
Processor	Intel Celeron 1.06 GHz	Core Duo 1.2 GHz
RAM	2 GB DDR2 (4 GB max)	4 GB DDR2 (4 GB max)
Hard-disk drive	100 GB, 2.5-in. SATA HDD	100 GB, 2.5-in. SATA HDD
Optical storage	—	DVD-RW/CD-RW
CompactFlash Type II	1 slot bootable when CF card inserted in slot ⁽¹⁾	2 slots: 1 slot bootable when CF card inserted in slot, 1 slot hot-swappable
Expansion slots	—	1200P: 2 half-length PCI (upgradable to 1 PCI slot + 1 PCI express) ⁽²⁾ 1500P/1700P: 1 half-length PCI, (upgradable to 2 PCI slots or 1 PCI + 1 PCI express) ⁽²⁾

(1) Does not apply to non-display versions.

(2) Accessory kit available for PCI expansion.

Bulletin	Display Size	Input Type	Package	Operating System	Power	Bezel Type
6181F- SSD drive	2 = No display 12 = 12.1 in. 15 = 15 in. 17 = 17 in.	N = No T = Touch screen	S = Standard P = Performance	7 = Windows 7 Professional (32-bit) XP = Windows XP Professional SP3 WE = Windows Embedded	Default = AC D = DC	Default = Aluminum SS = Stainless steel

6181F Integrated Display Computers with Solid-state Drives (SDD)

Cat. No.	Display Size	Resistive Touch Screen	Package	Windows Operating System	Power	Bezel	
1200P Model							
6181F-12TPW7	12.1-in. TFT display	•	Standard	Windows 7 Professional (32-bit)	AC	Aluminum	
6181F-12TPW7DC		•	Performance		DC		
6181F-12TSXP		•	Standard	Windows XP Professional SP3	AC		
6181F-12TPXP		•	Performance		AC		
6181F-12TPXPDC		•	Performance		DC		
6181F-12TSWE		•	Standard	Windows Embedded Standard 2009	AC	Aluminum	
6181F-12TPWE		•	Performance		AC		
6181F-12TPWEDC		•	Performance		DC		
6181F-2PW7		No-display	—	Performance	Windows 7 Professional (32-bit)	AC	Aluminum
6181F-2PW7DC	—		Performance	DC			
1500 Model							
6181F-15TPW7	15-in. TFT display	•	Performance	Windows 7 Professional (32-bit)	AC	Aluminum	
6181F-15TPW7DC		•	Performance		DC		
6181F-15TPW7SS		•	Performance		AC	Stainless steel	
6181F-15TSXP		•	Standard	Windows XP Professional SP3	AC	Aluminum	
6181F-15TPXP		•	Performance		AC		
6181F-15TPXPDC		•	Performance		DC		
6181F-15TPXPSS		•	Performance	AC	Stainless steel		
6181F-15TSWE		•	Standard	Windows Embedded Standard 2009	AC	Aluminum	
6181F-15TPWE		•	Performance		AC		
6181F-15TPWEDC		•	Performance		DC		
6181F-15TPWESS		•	Performance		AC		Stainless steel
1700P Model							
6181F-17TPW7	17-in. TFT display	•	Performance	Windows 7 Professional (32-bit)	AC	Aluminum	
6181F-17TPW7DC		•	Performance		DC		
6181F-17TPW7SS		•	Performance		AC	Stainless steel	
6181F-17TSXP		•	Standard	Windows XP Professional SP3	AC	Aluminum	
6181F-17TPXP		•	Performance		AC		
6181F-17TPXPDC		•	Performance		DC		
6181F-17TPXPSS		•	Performance		AC		Stainless steel
6181F-17TSWE		•	Standard	Windows Embedded Standard 2009	AC	Aluminum	
6181F-17TPWE		•	Performance		AC		
6181F-17TPWEDC		•	Performance		DC		
6181F-17TPWESS		•	Performance		AC		Stainless steel

Package Features: 6181F Integrated Display Computers with SDD

Package Features	Standard	Performance
Processor	Intel Celeron 1.06 GHz	Core Duo 1.2 GHz
RAM	2 GB DDR2 (4 GB max)	4 GB DDR2 (4 GB max)
Storage drive	16 GB CompactFlash solid-state drive	2.5-in. 32 GB SATA solid-state drive
Optical storage	—	DVD-RW/CD-RW
CompactFlash Type II	1 slot bootable when CF card inserted in slot ⁽¹⁾	2 slots: 1 slot bootable when CF card inserted in slot, 1 slot hot-swappable
Expansion slots	—	1200P: 2 half-length PCI (upgradable to 1 PCI slot + 1 PCI express) ⁽²⁾ 1500P/1700P: 1 half-length PCI, (upgradable to 2 PCI slots or 1 PCI + 1 PCI express) ⁽²⁾

(1) Does not apply to non-display versions.

(2) Accessory kit available for PCI expansion.

Accessories

The tables list accessories for the 6181P/6181F integrated display computers.

Storage Drives

Cat. No.	Description	For Use With
6189V-25HDDST100	2.5-in. 100 GB SATA hard-disk drive	6181P series E
6189V-25SSD32GB	2.5-in. 32 GB SATA solid-state drive	6181F series E
6189V-CFSSD8GB	CompactFlash 8 GB solid-state drive	6181P/6181F series E
6189V-CFSSD16GB	CompactFlash 16 GB solid-state drive	6181P/6181F series E

Memory Modules

Cat. No.	Description	For Use With
6189V-1GDDR2	1 GB DDR2 memory	6181P/F series E
6189V-2GDDR2	2 GB DDR2 memory	6181P/F series E

Add-in Cards and Modules

Cat. No.	Description	For Use With
6189V-COMMCARD	RS-232 serial PCI communication card	6181P/F
6189V-PCIENET	Ethernet PCI card, 10/100/1000Mbps	6181P/F
6189V-PCIDVI	PCI AGP/DVI video card, dual outputs	6181P/F
6189V-EXTPCIS	PCI expansion slot kit	6181P/F series E (performance)

Power Supply

Cat. No.	Description	For Use With
6189V-ACPS	External power supply, 100...240VAC, 65 W ATX	6181P/F series E (standard)

Protective Screen Covers

Cat. No.	Description	Quantity	For Use With
6189V-SCRNCOVER12	Protective screen cover	10	6181F-12, 6181P-12
6189V-SCRNCOVER15	Protective screen cover	10	6181F-15, 6181P-15
6189V-SCRNCOVER17	Protective screen cover	10	6181F-17, 6181P-17
6189V-15PCOVER	15-in. vinyl bezel cover	1	6181F-15, 6181P-15

Mounting Hardware

Cat. No.	Description	Quantity	For Use With
6189V-MCLPS3	Mounting clips	14	6181P/6181F series E

Cables

Cat. No.	Description	For Use With
6189V-DVICBL2	Digital video cable, 2 m (6.5 ft)	6181P/F series E (performance)
6189V-DVICBL5	Digital video cable, 5 m (16.4 ft)	6181P/F series E (performance)
2711-NC13	Touch screen cable, 5 m (16.4 ft)	6181P

Replacement Key

Cat. No.	Description	For Use With
6189V-USBKEY	Key for USB/power switch	6181P/F series E (performance)

Industrial Keyboards and Pointing Devices

Cat. No.	Description	Material	Buttons/Keys
6189V-HPMOUSE	PS/2 desktop mouse	Stainless Steel	3-button
6189V-HPMOUSEP	PS/2 panel-mount mouse		3-button
6189V-KBDEPS1	PS/2 desktop keyboard/mouse		116
6189V-KBPEPS1	PS/2 panel-mount keyboard mouse		116
6189V-KBDEPU1	PS/2 desktop keyboard/mouse	Polycarbonate	84
6189V-KBDEPU1U	USB desktop keyboard/mouse		84
6189V-KBDEPC1U	USB desktop keyboard/mouse		116

Integrated Display Computers with Keypad

With an integral display and keypad in the same unit, this platform can function as an operator input station or an industrial computer. The absence of external monitor cables and separate component mounting requirements makes for easy system integration. These panel-mount computers can control machinery or a process, display information necessary to repair, maintain, or start up a process; and gather basic production information for making informed business decisions:



- 12- or 15-inch flat panel displays with a resistive touch-screen option
- 36 or 44 configurable keys and alphanumeric keypad
- Lockable front-accessible USB port and power switch
- Two hot-swappable hard-disk drive bays, RAID capable
- Two full-length PCI, half-length PCI, and full-length ISA expansion slots
- Standard package or performance package equipped with higher processing power, and RAM and a DVD-RW drive

Product Selections

Bulletin	Display Size	Input Type	Package	Operating System	Power
6180P-	12 = 12.1 in. 15 = 15 in.	K = Keypad B = Key & Touch	S = Standard P = Performance	XP = Windows XP Professional SP3	Default = AC D = DC

Integrated Display Computer with Keypad

Cat. No.	Display Size	Resistive Touch Screen	Function Keys	Package	Operating System	Power
1200P Model						
6180P-12KSXP	12.1-in. TFT display	—	36	Standard	Windows XP Professional SP3	AC
6180P-12KPXP		—	36	Performance		AC
6180P-12BSXP		•	36	Standard		AC
6180P-12BPXP		•	36	Performance		AC
6180P-12BPXPDC		•	36	Performance		DC
1500P Model						
6180P-15KSXP	15.1-in. TFT display	—	44	Standard	Windows XP Professional SP3	AC
6180P-15KPXP		—	44	Performance		AC
6180P-15BSXP		•	44	Standard		AC
6180P-15BPXP		•	44	Performance		AC
6180P15BPXPDC		•	44	Performance		DC

Package Features: Integrated Display Computer with Keypad

Package Features	Standard	Performance
Processor	Celeron M 1.86GHz	Core Duo 2.0 GHz
RAM	1 GB DDR2	2 GB DDR2
Hard-disk drive	250 GB	250 GB
Optical storage	DVD-ROM/CD-RW	DVD-RW

Accessories

The tables list accessories for the 6180P display computers with a keypad.

Storage Drives

Cat. No.	Description	For Use With
6189V-35HDDST250	3.5-in. 250 GB SATA hard-disk drive	6180P

Memory Modules

Cat. No.	Description	For Use With
6189V-1GDDR2	1 GB DDR2 memory	6180P
6189V-2GDDR2	2 GB DDR2 memory	6180P

Add-in Cards and Modules

Cat. No.	Description	For Use With
6189V-COMMCARD	RS-232 serial PCI communication card	6180P, 6180W
6189V-PCIENET	Ethernet PCI card, 10/100/1000 Mbps	6180P, 6180W
6189V-PCIDVI	PCI AGP/DVI video card, dual outputs	6180P, 6180W
6189V-RAIDSATA	SATA RAID 0 and RAID 1 PCI card	6180P

Protective Screen Covers

Cat. No.	Description	Quantity	For Use With
6189V-SCRNCOVER12	Protective screen cover	10	6180W-12, 6180P-12
6189V-SCRNCOVER15	Protective screen cover	10	6180P-15, 6180W-15

Cables

Cat. No.	Description	For Use With
2711-NC13	Touch screen cable, 5 m (16.4 ft)	6180P

Replacement Key

Cat. No.	Description	For Use With
6189V-USBKEY	Key for USB/power switch	6180P

Industrial Keyboards and Pointing Devices

Cat. No.	Description	Material	Buttons/Keys
6189V-HPMOUSE	PS/2 desktop mouse	Stainless steel	3-button
6189V-HPMOUSEP	PS/2 panel-mount mouse		3-button
6189V-KBDEPS1	PS/2 desktop keyboard/mouse		116
6189V-KBPEPS1	PS/2 panel-mount keyboard/mouse		116
6189V-KBDEPU1	PS/2 desktop keyboard/mouse	Polycarbonate	84
6189V-KBDEPU1U	USB desktop keyboard/mouse		84
6189V-KBDEPC1U	USB desktop keyboard/mouse		116

Hazardous Location Computers

This extreme environment computer combines safety with extended operating temperature ratings. Industries from oil and gas to chemicals and mining must regularly work with potentially explosive materials, in locations where hardware often takes a beating. These computers are designed to endure the harsh extremes of heat and cold.

With both Class 1 Division 2 and ATEX hazardous location certification, the extreme environment computer can be safely used globally in areas where explosive materials may be present. The display version of this computer is panel mounted while the non-display version mounts on a wall. Both can withstand temperatures between -20...70 °C (-4...158 °F) inside a cabinet or enclosure. The surface temperature of the front of the display computer can withstand temperatures in the range -20...55 °C (-4...131 °F).



Product Selections

Bulletin	Display Size	Input Type	Package	Operating System	Input Power
6181X	12 = 12.1 in. N = No display	T = Touch	P = Performance	XP = Windows XP Professional SP3	DC = Standard

Hazardous Location Computer

Cat. No.	Display Size	Processor	RAM	Storage Drive	Expansion Slots	Operating System	Power	Mounting
1200XT Model								
6181X-12TPXPDC	12.1-in. TFT display • Resistive touch • Sunlight readable	Core Duo U2500, 1.2GHz	2 GB (4 GB max)	8 GB CompactFlash ⁽¹⁾	1 half-length PCI	Windows XP Professional SP3	DC	Panel
6181X-NPXPDC	No display	Core Duo U2500, 1.2GHz	2 GB (4 GB max)	8 GB CompactFlash ⁽¹⁾	1 half-length PCI	Windows XP Professional SP3	DC	Wall

(1) Another CompactFlash Type 2 slot available.

Accessories

The tables lists accessories for the hazardous location computer.

Memory Modules

Cat. No.	Description
6189X-4GDDR2	4 GB DDR2 memory

Mounting Hardware

Cat. No.	Description	Quantity
6189X-MCLPS	Mounting clips	10

Storage Drives

Cat. No.	Description
6189V-CFSSD16GB	CompactFlash 16 GB solid-state drive

Non-display Computers



The 6177R non-display computers (750R and 1450R) take advantage of the Intel second generation core processors to provide extremely powerful, highly reliable platforms suited for industrial environments. These computers are available in rugged machine-mount and rack-mount form factors and offer powerful remote management, onboard backup/restore, and integrated diagnostic capabilities.

Product Selections

Bulletin	Mounting	Package	Windows Operating System	Input Power
6177R	MM = Machine Mount	P = Performance	XP = XP Professional SP3	Default = AC power
	RM = RU Rack	A = Advanced	W7 = 7 Professional (64 bit)	DC = DC power
	M3 = M3 Machine Mount	S = Server	S8 = Server 2008 R2 (64 bit)	
			S3 = Server 2003 R2	
			NO = No operating system	

Non-display Computers

Cat. No.	Mounting	Package Features	Windows Operating System	Processor	RAM	Hard Drive	Optical Storage	Expansion Slots	Power
650R Model									
6177R-M3PXP	M3 Machine	Performance	Windows XP Professional SP3	Core Duo 2.0 GHz	2 GB	250 GB	CD-RW/DVD-RW	• 3 PCI • 1 ISA	AC
6177R-M3PXPDC	M3 Machine	Performance			2 GB	250 GB			DC
6177R-M3AS3	M3 Machine	Advanced	Windows Server 2003 R2		4 GB	250 GB			AC
750R Model									
6177R-MMPXP	Machine	Performance	Windows XP Professional SP3	Intel Core i3-2120 3.3 Ghz	4 GB 32 GB max	500 GB	DVD-RW	• 1 PCI • 1 PCI Express x16 • 1 PCI Express x4 • 1 PCI Express x1	AC
6177R-MMPW7	Machine	Performance	Windows 7 Professional (64 bit)						
6177R-MMPN0	Machine	Performance	No operating system						
6177R-MMAW7	Machine	Advanced	Windows 7 Professional (64 bit)	Intel Core i-2400 3.1 Ghz	8 GB 32 GB max	500 GB	DVD-RW		
6177R-MMSS8	Machine	Server	Windows Server 2008 R2 (64 bit)			(2) 500 GB ⁽¹⁾	DVD-RW		
6177R-MMSN0	Machine	Server	No operating system			(2) 500 GB			
1450R Model									
6177R-RMPXP	4U Rack	Performance	Windows XP Professional SP3	Intel Core i3-2120 3.3 Ghz	4 GB 32 GB max	500 GB	DVD-RW	• 4 PCI • 1 PCI Express x16 • 1 PCI Express x4 • 1 PCI Express x1	AC
6177R-RMPW7	4U Rack	Performance	Windows 7 Professional (64 bit)						
6177R-RMPN0	4U Rack	Performance	No operating system						
6177R-RMAW7	4U Rack	Advanced	Windows 7 Professional (64 bit)	Intel Core i-2400 3.1 Ghz	8 GB 32 GB max	500 GB	DVD-RW		
6177R-RMSS8	4U Rack	Server	Windows Server 2008 R2 (64 bit)			(2) 500 GB ⁽¹⁾	DVD-RW		
6177R-RMSN0	4U Rack	Server	No operating system			(2) 500 GB			

(1) Enabled for RAID 1 operation.

Process and Visualization Bundles

Specific models of the 6177R computer are configured as visualization servers or workstations for the PlantPAx™ Process Automation System. Each computer is prepackaged with specific hardware and software components.

Process and Visualization Bundles

Cat. No.	Description	Hardware	Software
7477-IS2VS100	Visualization server on industrial hardened computer. Includes a FactoryTalk View SE server license for 100 displays	Cat. no. 6177R-M3AS3 650R model	<ul style="list-style-type: none">• FactoryTalk Administration Console• FactoryTalk Directory server• FactoryTalk View SE server• FactoryTalk View SE client• FactoryTalk View Studio• FactoryTalk Alarms and Events• RSLinx Enterprise• RSLinx Classic• RSLinx Gateway• Logix5000™ clock tool• FactoryTalk Activation server• Rockwell Automation support tool
7477-IS2VS250	Visualization server on industrial hardened computer. Includes a FactoryTalk View SE server license for 250 displays		
7477-IC2VC	Visualization client workstation on industrially hardened computer. Includes a FactoryTalk View SE client license.	Cat. no. 6177R-M3PXP 650R model	<ul style="list-style-type: none">• FactoryTalk View SE client• FactoryTalk Alarms and Events• FactoryTalk Batch client• FactoryTalk eProcedure• FactoryTalk Activation client• Rockwell Automation support tool

For more information on the PlantPAx Process Automation System, go to <http://www.rockwellautomation.com/rockwellautomation/solutions-services/capabilities/process-solutions>.

Accessories

The tables list accessories for the 6177R non-display computers.

Storage Drives

Cat. No.	Description	For Use With
6189V-35HDD500GB	3.5-in. 500 GB SATA hard-disk drive	750R, 1450R (6177R Series C)
6189V-HDDTRAY	Empty hard-disk drive tray	750R, 1450R (6177R Series C)
6189V-35HDDST250	3.5-in. 250 GB SATA hard-disk drive	650R

Memory Modules

Cat. No.	Description	For Use With
6189V-4GDDR3	4 GB DDR3 memory	750R, 1450R (6177R Series C)
6189V-1GDDR2	1 GB DDR2 memory	650R
6189V-2GDDR2	2 GB DDR2 memory	650R

Add-in Cards and Modules

Cat. No.	Description	For Use With
6189V-COMMCARD	RS-232 serial PCI communication card	650R, 750R, 1450R
6189V-PCIENET	Ethernet PCI card, 10/100/1000 Mbps	650R, 750R, 1450R
6189V-PCIDVI	PCI AGP/DVI video card, dual outputs	650R, 750R, 1450R
6189V-RAIDSATA	SATA RAID 0 and RAID 1 PCI card	650R
6189V-PCIBARMM	I/O card retention bracket	750R (6177R Series C)
6189V-PCIBARRM	I/O card retention bracket	1450R (6177R Series C)

Mounting Hardware

Cat. No.	Description	For Use With
6189V-RACKSLIDES	Rackslides for mounting computer in rack cabinet	750R, 1450R

Cables

Cat. No.	Description	For Use With
6189V-DVIVGA	DVI-I to VGA adapter	750R, 1450R

Industrial Keyboards and Pointing Devices

Cat. No.	Description	Material	Buttons/Keys
6189V-HPMOUSE	PS/2 desktop mouse	Stainless Steel	3-button
6189V-HPMOUSEP	PS/2 panel-mount mouse		3-button
6189V-KBDEPS1	PS/2 desktop keyboard/mouse		116
6189V-KBPEPS1	PS/2 panel-mount keyboard mouse		116
6189V-KBDEPU1	PS/2 desktop keyboard/mouse	Polycarbonate	84
6189V-KBDEPU1U	USB desktop keyboard/mouse		84
6189V-KBDEPC1U	USB desktop keyboard/mouse		116

Compact Non-display Computers



These fanless computers provide an extremely durable computer option for harsh environments and require less space than most computers. Designed without cooling fans, the 6155F/6155R non-display computers come with either a mission critical solid-state drive or a continuous-duty hard-disk drive. Combine these features with the Windows Embedded Standard 2009 or Windows XP Professional operating system and you have the ideal platform for running visualization, control, or maintenance applications.

Product Selections

Bulletin	Display	Package	Operating System	Input Power
6155R HDD (hard-disk drive) or 6155F SSD (solid-state drive)	N = No display	S = Standard P = Performance	XP = Windows XP Professional SP3 WE = Windows Embedded Server 2009	Default = AC power DC = DC power

Compact Non-display Computers

Cat. No.	Display	Package	Windows Operating System	Power	Storage Drive		Processor	RAM	I/O Ports	Expansion Slots
					SSD	HDD				
200R Model - Solid-state Drive (SSD)										
6155F-NPXP	None	Performance	Windows XP Professional SP3	AC	32 GB	—	Celeron M 1 GHz	2 GB	• 2 serial • 2 Ethernet LAN • 4 USB • 1 VGA • 1 PS/2 mouse • 1 PS/2 keyboard	None
6155F-NPXPDC		Performance		DC	32 GB	—		2 GB		None
6155F-NPWE		Performance	Windows Embedded Standard 2009	AC	32 GB	—		2 GB		None
6155F-NPWEDC		Performance		DC	32 GB	—		2 GB		None
200R Model - Hard-disk Drive (HDD)										
6155R-NPXP	None	Performance	Windows XP Professional SP3	AC	—	100 GB	Celeron M 1 GHz	2 GB	• 2 serial • 2 Ethernet LAN • 4 USB • 1 VGA • 1 PS/2 mouse • 1 PS/2 keyboard	None
6155R-NPXPDC		Performance		DC	—	100 GB		2 GB		None
6155R-NSXP		Standard		AC	—	100 GB		1 GB		• 1 serial • 1 Ethernet LAN • 4 USB • 1 VGA • 1 PS/2 mouse • 1 PS/2 keyboard

Accessories

The tables list accessories for the 6155R compact non-display computers.

Storage Drives

Cat. No.	Description	For Use With
6189V-25HDDST100	2.5-in. 100 GB SATA hard-disk drive	6155R series E
6189V-25SSD32GB	2.5-in. 32 GB SATA solid-state drive	6155F series E
6189V-CFSSD8GB	CompactFlash 8 GB solid-state drive	6155R/6155F series E
6189V-CFSSD16GB	CompactFlash 16 GB solid-state drive	6155F series E

Memory Modules

Cat. No.	Description	For Use With
6189V-1GSODDDR2	1 GB DDR2 SODIMM memory	6155R/6155F series E
6189V-2GSODDDR2	2 GB DDR2 SODIMM memory	6155R/6155F series E

Add-in Cards and Modules for Legacy Non-Display Computers

Cat. No.	Description	For Use With
6189V-COMMCARD	RS-232 serial PCI communication card	6155R-7, 6155R-14
6189V-PCIENET	Ethernet PCI card, 10/100/1000 Mbps	6155R-7, 6155R-14
6189V-PCIDVI	PCI AGP/DVI video card, dual outputs	6155R-7, 6155R-14

Cables

Cat. No.	Description	For Use With
2711-NC13	Touch screen cable, 5 m (16.4 ft)	6155R

Industrial Keyboards and Pointing Devices

Cat. No.	Description	Material	Buttons/Keys
6189V-HPMOUSE	PS/2 desktop mouse	Stainless steel	3-button
6189V-HPMOUSEP	PS/2 panel-mount mouse		3-button
6189V-KBDEPS1	PS/2 desktop keyboard/mouse		116
6189V-KBPEPS1	PS/2 panel-mount keyboard/mouse		116
6189V-KBDEPU1	PS/2 desktop keyboard/mouse	Polycarbonate	84
6189V-KBDEPU1U	USB desktop keyboard/mouse		84
6189V-KBDEPC1U	USB desktop keyboard/mouse		116

Replacement Battery

Cat. No.	Description	For Use With
6189V-BATTERY	Replacement battery	6155R series E

Industrial Monitors

Whether your visualization application is on the factory floor or in a control room, the monitor portfolio provides versatile mounting configurations and interface options to choose from.

The industrial monitors deliver the latest in LCD technology for rugged industrial environments. Combine these monitors with any of the Rockwell Automation non-display computers to create a powerful visualization, maintenance, control, or information computing solution:

- The performance monitors are ideal for special purpose environments such as Class 1 Division 2, and food & beverage areas, providing superior protection against heat, shock, and vibration. Combine with the 6181X hazardous location computer for a complete system solution.
- The standard monitors are suited for less demanding environments but still able to maintain endurance to temperature, shock, and vibration.



Performance Monitors



Standard Monitor Selections

Bulletin	Display Size	Mounting Type ⁽¹⁾	Touch screen
6176M	15 = 15 in.	P = Panel	N = No touch screen
Standard Monitors	17 = 17 in.	V = VESA	T = Touch screen
	19 = 19 in.		

(1) Panel-mount monitors have aluminum bezels. VESA mount monitors have plastic bezels.

Standard Monitors

Cat. No.	Display Size	Mounting	Resistive Touchscreen	Bezel	Includes
1550M Model					
6176M-15PN	15-in. TFT LCD display	Panel	—	Aluminum	Cables and power supply
6176M-15PT		Panel	•	Aluminum	
6176M-15VN		VESA	—	Plastic	
6176M-15VT		VESA	•	Plastic	
1750M Model					
6176M-17PN	17-in. TFT LCD display	Panel	—	Aluminum	Cables and power supply
6176M-17PT		Panel	•	Aluminum	
6176M-17VN		VESA	—	Plastic	
6176M-17VT		VESA	•	Plastic	
1950M Model					
6176M-19PN	19-in. TFT LCD display	Panel	—	Aluminum	Cables and power supply
6176M-19PT		Panel	•	Aluminum	
6176M-19VN		VESA	—	Plastic	
6176M-19VT		VESA	•	Plastic	

Performance Monitor Selections

Bulletin	Display Size	Mounting Type	Touch Screen	Bezel Type
6186M Performance Monitors	12 = 12.1 in. 15 = 15 in. 17 = 17 in. 19 = 19 in.	P = Panel V = VESA	N = No touch screen T = Touch screen	Default = Aluminum SS = Stainless steel

Performance Monitors

Cat. No. ⁽¹⁾	Display Size	Resistive Touchscreen	Bezel	Includes
1200M Model				
6186M-12PN	12.1-in. TFT LCD display	—	Aluminum	Cables and power supply
6186M-12PT		•	Aluminum	
1500M Model				
6186M-15PN	15-in. TFT LCD display	—	Aluminum	Cables and power supply
6186M-15PT		•	Aluminum	
6186M-15PNSS		—	Stainless steel	
6186M-15PTSS		•	Stainless steel	
1700M Model				
6186M-17PN	17-in. TFT LCD display	—	Aluminum	Cables and power supply
6186M-17PT		•	Aluminum	
6186M-17PNSS		—	Stainless steel	
6186M-17PTSS		•	Stainless steel	
1900M Model				
6186M-19PN	19-in. TFT LCD display	—	Aluminum	Cables and power supply
6186M-19PT		•	Aluminum	
6186M-19PNSS		—	Stainless steel	
6186M-19PTSS		•	Stainless steel	

(1) All 6186M models are suitable for hazardous location environments.

Monitor Accessories

The tables list accessories for the 6176M and 6186M industrial monitors.

Power Supply

Cat. No.	Description	For Use With
6189V-MPS3	AC-to-DC power adapter	6176M, 6186M

Protective Screen Covers

Cat. No.	Description	Quantity	For Use With
6189V-SCRNCOVER12	Protective screen cover	10	6186M-12
6189V-SCRNCOVER15	Protective screen cover	10	6176M-15, 6186M-15
6189V-SCRNCOVER17	Protective screen cover	10	6176M-17, 6186M-17
6189V-15PCOVER	15-in. vinyl bezel cover	1	6186M-15

Mounting Hardware

Cat. No.	Description	Quantity	For Use With
6189V-MCLPS2	Mounting clips	12	6176M
6189V-MCLPS3	Mounting clips	14	6176M/6186M

Cables

Cat. No.	Description	For Use With
6189V-DVICBL2	Digital video cable, 2 m (6.5 ft)	6176M, 6186M (except 6186-M12 series A-D)
6189V-DVICBL5	Digital video cable, 5 m (16.4 ft)	6176M, 6186M (except 6186-M12 series A-D)
2711-NC13	Touch screen cable, 5 m (16.4 ft)	6176M, 6186M
6189V-TCHCBL2	Serial touch screen cable, 2 m (6.5 ft)	6176M, 6186M
6189V-VGACBL2	Analog VGA video cable, 1.8 m (6 ft)	6176M, 6186M
6189V-USBCBL2	USB cable, 1.8 m (6 ft)	6176M, 6186M

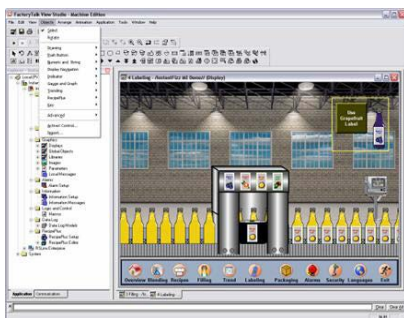
HMI Software

FactoryTalk View performance and visibility HMI software, including FactoryTalk View Machine Edition, FactoryTalk View Site Edition, FactoryTalk ViewPoint, and FactoryTalk View Studio are designed with a common look, feel, and navigation to help speed HMI development and training time.

Supporting the Rockwell Automation Integrated Architecture platform, FactoryTalk View software is part of the scalable and unified suite of monitoring and control solutions designed to span machine-level applications through supervisory-level HMI applications across a network. This suite of HMI software products offers you a common development environment, application reuse, and architecture to increase productivity, reduce operation costs, and improve quality.

Combining Rockwell Automation hardware with its software assures comprehensive application support from an industry leader. For a complete list of available HMI software, visit <http://www.rockwellautomation.com/rockwellssoftware>.

FactoryTalk View Machine Edition Software



FactoryTalk View Machine Edition (ME) software supports both open and embedded operator interface solutions for monitoring and controlling individual machines or small processes. This software features a consistent operator interface across multiple platforms, including Microsoft Windows CE, Windows 7, Vista, XP, and Server solutions. FactoryTalk View ME software consists of a design and runtime environment.

FactoryTalk View Studio Software

FactoryTalk View Studio software is the design environment for creating and testing HMI applications, including graphic displays, trending, alarming, and real-time animation. Runtime files can be generated to run on a PanelView Plus 6 terminal or industrial computer.

FactoryTalk View ME Station

FactoryTalk View ME Station is the runtime environment for HMI applications. FactoryTalk View ME Station is automatically installed and activated on PanelView Plus 6 terminals. FactoryTalk View ME activation is required when running HMI applications on industrial computers.

FactoryTalk View ME software offers many advantages:

- Alarming to alert operators to conditions requiring immediate action
- Security to restrict operator access to specific displays
- RecipePlus for machine or process recipe management
- Runtime language switching supports up to 20 languages per application
- Global and predefined objects are time and memory savers
- RSLogix™ 5000 and Logix Designer process faceplates
- Ability to convert runtime application to design application
- Parameter passing to facilitate reuse of displays and design efficiency

FactoryTalk View Site Edition Software

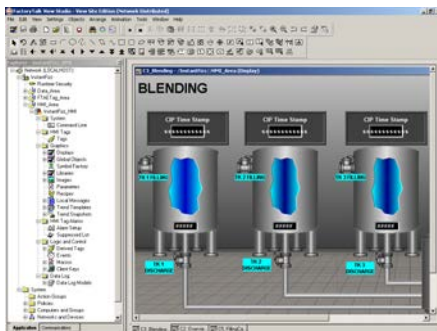
FactoryTalk View Site Edition (SE) software is an HMI for developing supervisory-level monitoring and control applications. This distributed and scalable architecture can be applied to a standalone, one-server/one-user application to multiple users interfacing with multiple servers. Runtime servers and clients are supported allowing customers to develop and deploy a multi-server/multi-client application.

FactoryTalk View SE applications are created and tested within the FactoryTalk View Studio design environment:

- Share data and seamless integration with other FactoryTalk enabled products. The FactoryTalk Services Platform provides common services such as security, alarming, and diagnostics across products.
- Optimize plant communication with FactoryTalk Live Data and premier connectivity to Rockwell Automation controllers.
- Access tag information directly in the controller, eliminating the need to create HMI tags.
- Configure an application from anywhere on the network and make changes to a running system with a remote, multi-user configuration capability.
- Define graphic displays once and reference them throughout a distributed system.
- Provide an audit trail of operator and alarm information in a centralized log database.
- Customize the operator experience by using client-side VBA and the exposed graphics object model.
- Maximize system availability with online creation and editing of graphics and optional server redundancy.



FactoryTalk View Studio Software



FactoryTalk View Machine Edition and FactoryTalk View Site Edition share a common design environment called FactoryTalk View Studio for creating applications. The ability to edit and reuse projects in FactoryTalk View Studio improves portability between embedded machine and supervisory HMI systems.

With FactoryTalk View software, all products in the suite are built on the same integrated, scalable architecture. Application developers can import entire machine-level applications into supervisory-level applications or drag individual components and drop them right into supervisory projects, saving development time and reducing engineering and training costs.

Plus, you can protect your current HMI investments by importing PanelBuilder™ 32 (PanelView) applications into FactoryTalk View ME software and RSView® 32 applications into FactoryTalk View SE software.

With FactoryTalk View Studio software, you can do the following:

- Configure a single operator station or an entire distributed application from one location.
- Access tags from OPC servers throughout the system via a tag browser that presents direct controller tags and HMI tags in a logical hierarchy.
- Remotely configure RSLinx and FactoryTalk View SE servers.
- Create displays by using a full-featured graphics editor.
- Define display test in multiple languages, allowing operators to switch the language at runtime.
- Use pre-engineered faceplates to interface with the process control functions in the Logix controllers.

FactoryTalk ViewPoint Software

An add-on to FactoryTalk View SE software and PanelView Plus 6 terminals, FactoryTalk ViewPoint software provides on-demand access to important information about your plant or process from a web browser. Plant managers, supervisors, OEMs, system integrators, and other key stakeholders can now access, monitor, and interact with plant floor operations from virtually any location. The thin-client configuration means no client software to install and maintain, lowering total cost of ownership:

- Fully scalable, animated web applications viewable in the office, at home, or on the road.
- Gives managers, OEMs, and system integrators read and write capability to both view and control real-time plant floor operations by logging into an Internet browser.
- Gain fast access to real-time information by using a standard web browser.
- Supports multiple browsers and client devices for increased flexibility.
- Lets FactoryTalk View projects be web-enabled without requiring application changes.
- Monitor and control HMI applications, perform diagnostics, and provide remote support without having to be at customer sites.



Software Comparison

TECHNOLOGY: Customer Requirements	FactoryTalk View Site Edition	FactoryTalk View Machine Edition	RSView32
Operating systems (32-bit)	<ul style="list-style-type: none"> Windows XP SP3 Windows 7 Professional Windows Vista Business Windows Server 2003 R2 SP3 Windows Server 2008 SP2 	<ul style="list-style-type: none"> Windows XP Windows 7 Professional Windows CE Windows Vista Business Windows Server 2003/2008 	<ul style="list-style-type: none"> Windows XP SP3 Windows 7 Professional Windows Server 2003 R2 SP3 Windows Server 2008 SP2
Operating systems (64-bit)	<ul style="list-style-type: none"> Windows 7 Professional SP1 and SP2 Windows Server 2008 R2 SP2 	<ul style="list-style-type: none"> Windows 7 Professional SP1 Windows Server 2008 R2 and SP2 	
Embedded platforms		✓	
Windows domain security	✓	✓	✓
OPC/ActiveX	✓	✓	✓
FactoryTalk enabled	✓	✓	✓
Server-side VBA			✓
Client-side VBA	✓		

ARCHITECTURE: Customer Requirements	FactoryTalk View Site Edition		FactoryTalk View Machine Edition	RSView32
Primary application	Supervisory level: single-station or multiple-server, multiple-client		Machine level: single-station	Supervisory level; single station or single server, multiple client
Tag-based HMI	✓		✓	<ul style="list-style-type: none"> Windows XP/2000/NT/9x/ Windows Server 2003
Direct referencing	✓		✓	
	Network (Distributed)	Local		
Max number of servers/clients	10/50			1/20
FactoryTalk ViewPoint	✓	✓	✓ ⁽¹⁾	✓
RSView32 web server				✓
Thin clients (terminal services)	✓			✓
Multi-user development	✓			
Remote configuration at runtime	✓			
Redundancy - data server	✓			
Redundancy - HMI server	✓			Active display

(1) Supported only on PanelView Plus 6 terminals.

FEATURES: Customer Requirements	FactoryTalk View Site Edition	FactoryTalk View Machine Edition	RSView32
Animation - visibility, color, fill, horizontal and vertical position, width, height, rotation, horizontal and vertical slider, and more	And touch	No touch animation	And touch
Alarms	<ul style="list-style-type: none"> FactoryTalk alarms and events HMI alarms Digital and analog Defined alarm severities Alarm log 	<ul style="list-style-type: none"> Tag-based (from controller) Alarm log 	<ul style="list-style-type: none"> Tag-based Digital and analog Definable alarm severities Alarm log
Data logging	<ul style="list-style-type: none"> 20 data log models per project Each with up to 10,000 tags Log to ODBC or proprietary database 	<ul style="list-style-type: none"> 1 data log model per project With up to 100 tags 1,000 K records max Export to dbf 	<ul style="list-style-type: none"> 20 plus data log models per project Each with up to 10,000 tags Log to ODBC or proprietary database
Trending	TrendX 4.0	TrendX 4.0 subset	TrendX 3.1 and native
Security	<ul style="list-style-type: none"> Security assigned to tags, graphic displays, macros, commands, OLE objects Local or Windows security 	<ul style="list-style-type: none"> Display-based Local or Windows security 	<ul style="list-style-type: none"> Security assigned to tags, graphic displays, macros, commands, OLE objects Local or Windows security
Other features	<ul style="list-style-type: none"> Test run macros Derived tags Event detector 	<ul style="list-style-type: none"> Test run macros Derived tags S/BTest RunMacrosDerived Tags 	<ul style="list-style-type: none"> Test run macros Derived tags Event detector
Pricing model	<ul style="list-style-type: none"> Display-based pricing Multiple levels 	<ul style="list-style-type: none"> Included with PanelView Plus 6 or display-based pricing Multiple levels for FactoryTalk View ME Station 	<ul style="list-style-type: none"> Tag-based pricing Multiple levels

Software Selection

FactoryTalk View Machine Edition (ME) Software

Cat. No. ⁽¹⁾	Description
9701-VWSTMENE	FactoryTalk View Studio for Machine Edition - Configuration software for developing and testing machine level HMI applications. FactoryTalk View Machine Edition includes RSLinx Enterprise and KEPServer Enterprise software.

(1) Order localized versions of the software by replacing EN in the catalog number with DE for German, FR for French, JP for Japanese, or ZH for Chinese.

FactoryTalk View Machine Edition (ME) Station

Cat. No. ⁽¹⁾	Description ^{(2) (3)}
9701-VWMR015AENE	FactoryTalk View ME Station runtime 15 displays
9701-VWMR030AENE	FactoryTalk View ME Station runtime 30 displays
9701-VWMR075AENE	FactoryTalk View ME Station runtime 75 displays
9701-VWMR250AENE	FactoryTalk View ME Station runtime 250 displays RS-232 operating cable, 9-pin D Shell to 8-pin Mini DIN

(1) Order localized versions of the software by replacing EN in the catalog number with DE for German, FR for French, JP for Japanese, or ZH for Chinese.

(2) FactoryTalk View Machine Edition Station is the runtime environment used to run FactoryTalk View ME projects created with FactoryTalk View Studio software on any computer with the Windows CE, Windows 7 Professional, Windows XP/Vista Home Basic/Vista Business, or Windows Server 2003/2008 operating system including the industrial computers.

(3) FactoryTalk View ME Station Runtime is included with all PanelView Plus 6 terminals.

FactoryTalk View Site Edition (SE) Software

Cat. No. ⁽¹⁾	Description ⁽²⁾
9701-VWSTENE	FactoryTalk View Studio for FactoryTalk View Enterprise- configuration software for developing and testing machine level and supervisory level HMI applications
9701-VWSCWAENE	FactoryTalk View SE Client - software for viewing and interacting with FactoryTalk View SE Servers ⁽³⁾
9701-VWSCRAENE	FactoryTalk View SE View Client - provides read-only capabilities
9701-VWSB015AENE	FactoryTalk View SE Station 15 display
9701-VWSB025AENE	FactoryTalk View SE Station 25 display
9701-VWSB100AENE	FactoryTalk View SE Station 100 display
9701-VWSB250AENE	FactoryTalk View SE Station 250 display
9701-VWSB000AENE	FactoryTalk View SE Station unlimited display
9701-VWSS025LENE	FactoryTalk View SE Server 25 display with RSLinx Enterprise
9701-VWSS100LENE	FactoryTalk View SE Server 100 display with RSLinx Enterprise
9701-VWSS250LENE	FactoryTalk View SE Server 250 display with RSLinx Enterprise
9701-VWSS000LENE	FactoryTalk View SE Server unlimited display with RSLinx Enterprise

(1) Order localized versions of the software by replacing EN in the catalog number with DE for German, FR for French, JP for Japanese, or ZH for Chinese.

(2) FactoryTalk View Station and FactoryTalk View SE Server include RSLinx Enterprise and RSLinx Classic software, version 2.x.

(3) FactoryTalk View SE Server stores HMI project components and serves to clients, for example, graphic displays.

FactoryTalk ViewPoint Software

Cat. No. ⁽¹⁾	Description ⁽²⁾
9522-VWP01RENE	FactoryTalk ViewPoint 1-client system
9522-VWP03RENE	FactoryTalk ViewPoint 3-client system
9522-VWP05RENE	FactoryTalk ViewPoint 5-client system
9522-VWP10RENE	FactoryTalk ViewPoint 10-client system
9522-VWP25RENE	FactoryTalk ViewPoint 25-client system
9522-VWP50RENE	FactoryTalk ViewPoint 50-client system

(1) Order any of these catalog numbers to use FactoryTalk ViewPoint software with FactoryTalk View SE network or local applications.

(2) FactoryTalk ViewPoint server and a single client access license is included with the purchase of a PanelView Plus 6 terminal. No other catalog numbers are required to use FactoryTalk ViewPoint software with PanelView Plus 6 terminals.

RSView32 Software

Cat. No.	Description ⁽¹⁾
9301-2SE3104	RSView32 Runtime 150 with RSLinx single node
9301-2SE3103	RSView32 Runtime 150 with RSLinx - Includes 9301-2SE3100 RSView32 Runtime 150 and 9355-WABENE RSLinx software
9301-2SE3100	RSView32 Runtime 150 - 150 tag database and standalone runtime
9301-2SE2104	RSView32 Works 150 with RSLinx single node
9301-2SE2103	RSView32 Works 150 with RSLinx - Includes 9301-2SE2100 RSView32 Works 150 and 9355-WABENE RSLinx software
9301-2SE2100	RSView32 Works 150 - 150 tag database including development and one embedded runtime
9301-2SE3204	RSView32 Runtime 300 with RSLinx Classic single node
9301-2SE3203	RSView32 Runtime 300 with RSLinx Classic - Includes 9301-2SE3203 RSView32 Runtime 300 and 9355-WABENE RSLinx Classic software
9301-2SE3200	RSView32 Runtime 300 - 300 tag database and standalone runtime
9301-2SE2204	RSView32 Works 300 with RSLinx Classic single node
9301-2SE2203	RSView32 Works 300 with RSLinx Classic - Includes 9301-2SE2200 RSView32 Works 300 and 9355-WABENE RSLinx Classic software
9301-2SE2200	RSView32 Works 300 - 300 tag database including development and one embedded runtime
9301-2SE3304	RSView32 Runtime 1500 with RSLinx Classic single node
9301-2SE3303	RSView32 Runtime 1500 with RSLinx Classic including 9301-2SE3300 RSView32 Runtime 1500 and 9355-WABENE RSLinx Classic software
9301-2SE3300	RSView32 Runtime 1500 - 1500 tag database and standalone runtime
9301-2SE2304	RSView32 Works 1500 with RSLinx Classic single node
9301-2SE2303	RSView32 Works 1500 with RSLinx Classic including 9301-2SE2300 RSView32 Works 1500 and 9355-WABENE RSLinx Classic software
9301-2SE2300	RSView32 Works 1500 - 1500 tag database including development and one embedded runtime
9301-2SE3353	RSView32 Runtime 5000 with RSLinx Classic including 9301-2SE3300 RSView32 Runtime 5000 and 9355-WABENE RSLinx Classic software
9301-2SE3350	RSView32 Runtime 5000 - 5000 tag database and standalone runtime
9301-2SE2353	RSView32 Works 5K with RSLinxRSView32 Works 5000 with RSLinx Classic - Includes 9301-2SE2350 RSView32 Works 5000 and 9355-WABENE RSLinx Classic software
9301-2SE2350	RSView32 Works 5000 - 5000 tag database including development and one embedded runtime
9301-2SE3403	RSView32 Runtime 32K with RSLinx Classic - Includes 9301-2SE3400 RSView32 Runtime 2K and 9355-WABENE RSLinx Classic software
9301-2SE3400	RSView32 Runtime 32K - 32,000 tag database and standalone runtime
9301-2SE2403	RSView32 Works 32K with RSLinx Classic - Includes 9301-2SE2400 RSView32 Works 32K and 9355-WABENE RSLinx Classic software
9301-2SE2400	RSView32 Works 32K - 32,000 tag database including development and one embedded runtime

RSView32 Software

Cat. No.	Description ⁽¹⁾
9301-2SE3503	RSView32 Runtime 100K with RSLinx Classic - Includes 9301-2SE3500 RSView32 Runtime 100K and 9355-WABENE RSLinx Classic software
9301-2SE3500	RSView32 Runtime 100K - 100,000 tag database and standalone runtime
9301-2SE2503	RSView32 Works 100K with RSLinx Classic - Includes 9301-2SE2500 RSView32 Works 100K and 9355-WABENE RSLinx Classic software
9301-2SE2500	RSView32 Works 100K - 100,000 tag database including development and one embedded runtime
9301-RSVWSENE	RSView32 WebServer software
9301-MSGRPROENE	RSView32 Messenger Pro software

(1) Monitors, controls, and acquires data.

RSView32 Active Display System

Cat. No.	Description ⁽¹⁾
9305-RSVADSENE	RSView32 Active Display Server - Includes one active display server (no clients)
9305-ADSGWENE	RSView32 Active Display Server with RSLinx Gateway - Includes one active display server (no clients) and 9355-WABGWENE RSLinx Gateway software
9305-RSVADFCENE	RSView32 Active Display Floating Client - Includes one client with server-side activation
9305-RSVADDCENE	RSView32 Active Display Dedicated Client - Includes one client with client-side activation
9305-RSVADFCENE	RSView32 Active Display Floating View Client - Includes one view-only client with server-side activation

(1) Client/Server Enhancement to RSView32 software

RSView32 Languages

Cat. No.	Description
Choose language by replacing the xx in the catalog number with FR for French, ES for Spanish, IT for Italian, DE for German, PT for Portuguese, JP for Japanese, ZH for Chinese and KO for Korean	
9301-2SE2100xxE	RSView32 Works 150
9301-2SE2103xxE	RSView32 Works 150 with RSLinx Classic Bundle
9301-2SE2200xxE	RSView32 Works 300
9301-2SE2203xxE	RSView32 Works 300 with RSLinx Classic Bundle
9301-2SE2300xxE	RSView32 Works 1500
9301-2SE2303xxE	RSView32 Works 1500 with RSLinx Classic Bundle
9301-2SE2350xxE	RSView32 Works 5K
9301-2SE2353xxE	RSView32 Works 5K with RSLinx Classic Bundle
9301-2SE2400xxE	RSView32 Works 32K
9301-2SE2403xxE	RSView32 Works 32K with RSLinx Classic Bundle
9301-2SE2500xxE	RSView32 Works 100K
9301-2SE2503xxE	RSView32 Works 100K with RSLinx Classic Bundle
9301-2SE3100xxE	RSView32 Runtime 150
9301-2SE3103xxE	RSView32 Runtime 150 with RSLinx Classic Bundle
9301-2SE3200xxE	RSView32 Runtime 300
9301-2SE3203xxE	RSView32 Runtime 300 with RSLinx Classic Bundle
9301-2SE3300xxE	RSView32 Runtime 1500
9301-2SE3303xxE	RSView32 Runtime 1500 with RSLinx Classic Bundle
9301-2SE3350xxE	RSView32 Runtime 5K

RSView32 Languages

Cat. No.	Description
9301-2SE3353xxE	RSView32 Runtime 5K with RSLinx Classic Bundle
9301-2SE3400xxE	RSView32 Runtime 32K
9301-2SE3403xxE	RSView32 Runtime 32K with RSLinx Classic Bundle
9301-2SE3500xxE	RSView32 Runtime 100K
9301-2SE3503xxE	RSView32 Runtime 100K with RSLinx Classic Bundle
Choose language by replacing the xx in the catalog number with FR for French, ES for Spanish, IT for Italian, DE for German, PT for Portuguese	
9305-RSVADSxxE	RSView32 Active Display Server
9305-RSVADFCxxE	RSView32 Active Display Floating Client
9305-RSVADDCxxE	RSView32 Active Display Dedicated Client
9305-RSVADFVCxxE	RSView32 Active Display Floating View Client

Third-party Connectivity

Cat. No.	Description
9301-OPCSRVE	KEPServer Enterprise for FactoryTalk View Site Edition and RSView32 software

Allen-Bradley, Rockwell Software, Rockwell Automation, and LISTEN. THINK. SOLVE are trademarks of Rockwell Automation, Inc.
Trademarks not belonging to Rockwell Automation are property of their respective companies.

www.rockwellautomation.com

Power, Control and Information Solutions Headquarters

Americas: Rockwell Automation, 1201 South Second Street, Milwaukee, WI 53204-2496 USA, Tel: (1) 414.382.2000, Fax: (1) 414.382.4444
Europe/Middle East/Africa: Rockwell Automation NV, Pegasus Park, De Kleetlaan 12a, 1831 Diegem, Belgium, Tel: (32) 2 663 0600, Fax: (32) 2 663 0640
Asia Pacific: Rockwell Automation, Level 14, Core F, Cyberport 3, 100 Cyberport Road, Hong Kong, Tel: (852) 2887 4788, Fax: (852) 2508 1846